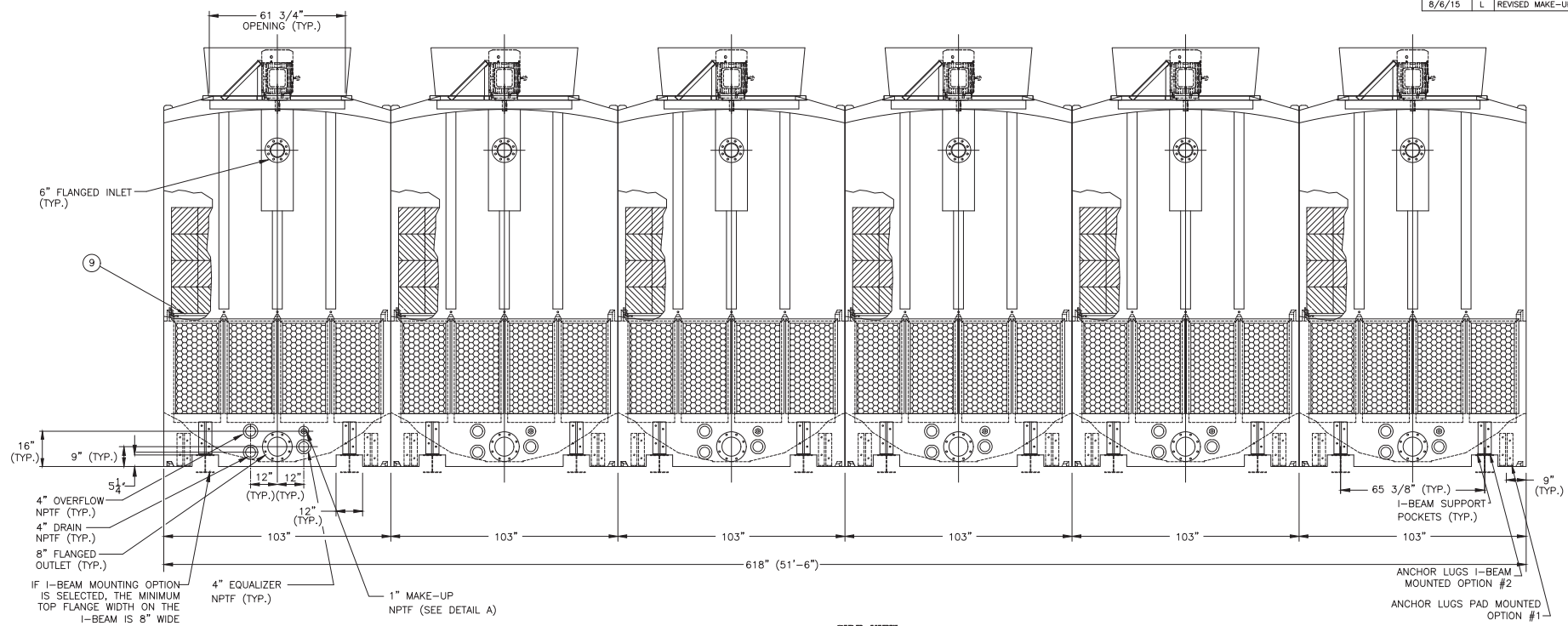
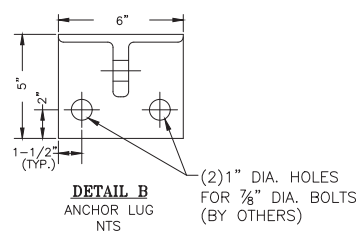
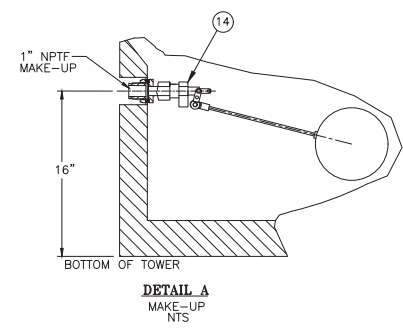


DATE	SYM	REVISION	AUTH	CHK
2/28/02	A	REV. INLET	BLO	JF
4/8/02	B	REV. OUTLET & POCKET	BLO	JF
1/28/03	C	ADDED DETAIL B	GT	JF
8/30/05	D	REVISE MAKE-UPS, I-BEAM SUPPORT	KF	JF
9/19/06	E	MOD. MAKE-UP, ANCHOR BOLTS	KF	JBH
4/14/09	F	REVISED HEIGHT	KF	JBH
5/25/10	G	REV. MAKE-UP, LOUVER MATERIAL	KF	JBH
10/26/11	H	REV. MAKE-UP FLOAT	LM	JBH
5/7/13	I	REV. ANCHOR LUG & POCKETS	FP	JBH
8/7/14	J	UPDATED DRAWING	FP	JBH
10/9/14	K	I-BEAM POCKET DIMENSION	FP	JBH
8/6/15	L	REVISED MAKE-UP	MO	JBH

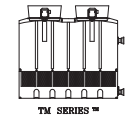


SIDE VIEW



NOTES:

- SEE DRAWING DT-D-87-907-1 FOR PLAN VIEW & ELEVATION.

	<b>DELTA COOLING TOWERS, INC.</b> 185 US HIGHWAY 206, ROXBURY TWP. NJ, 07836 PH 973.586.2201 FAX 973.586.2243	
	TITLE <b>6 CELL</b>	DWN BY <i>Bonnie L. Oddo</i> APPVD BY <i>John Flaherty</i>
SCALE NTS DATE 7/18/01	DWG NO. <b>DT-D-87-907-2</b>	