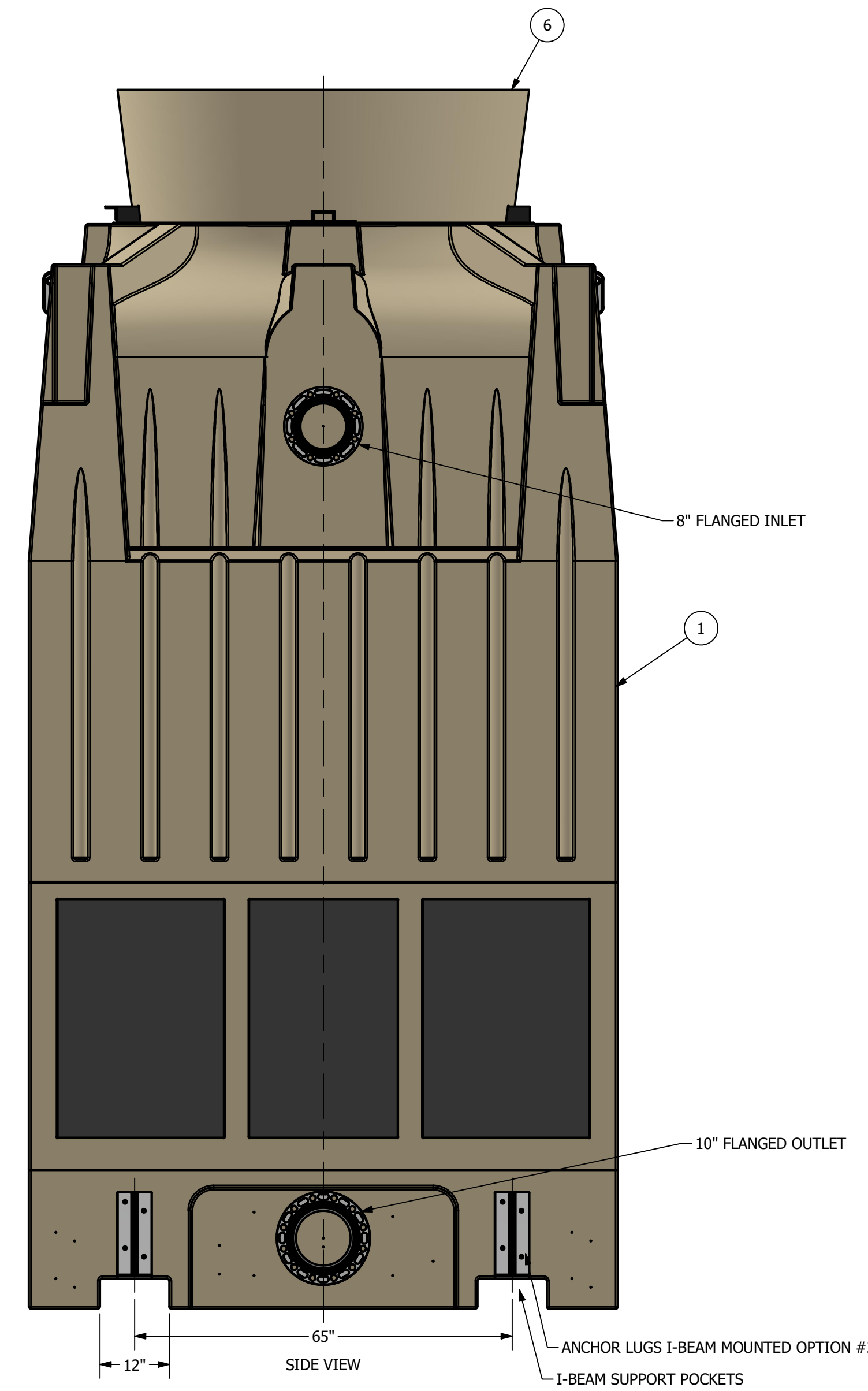
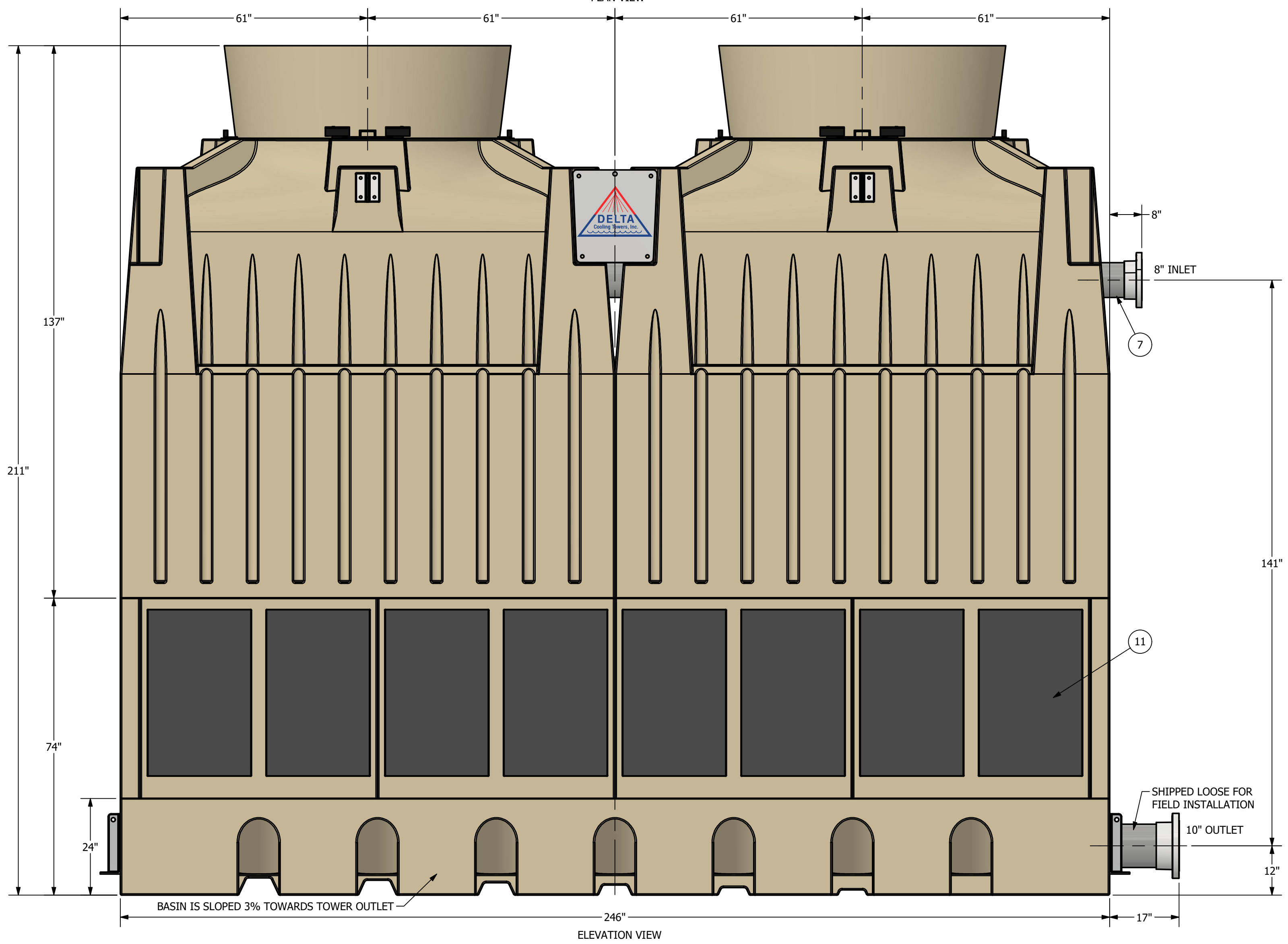
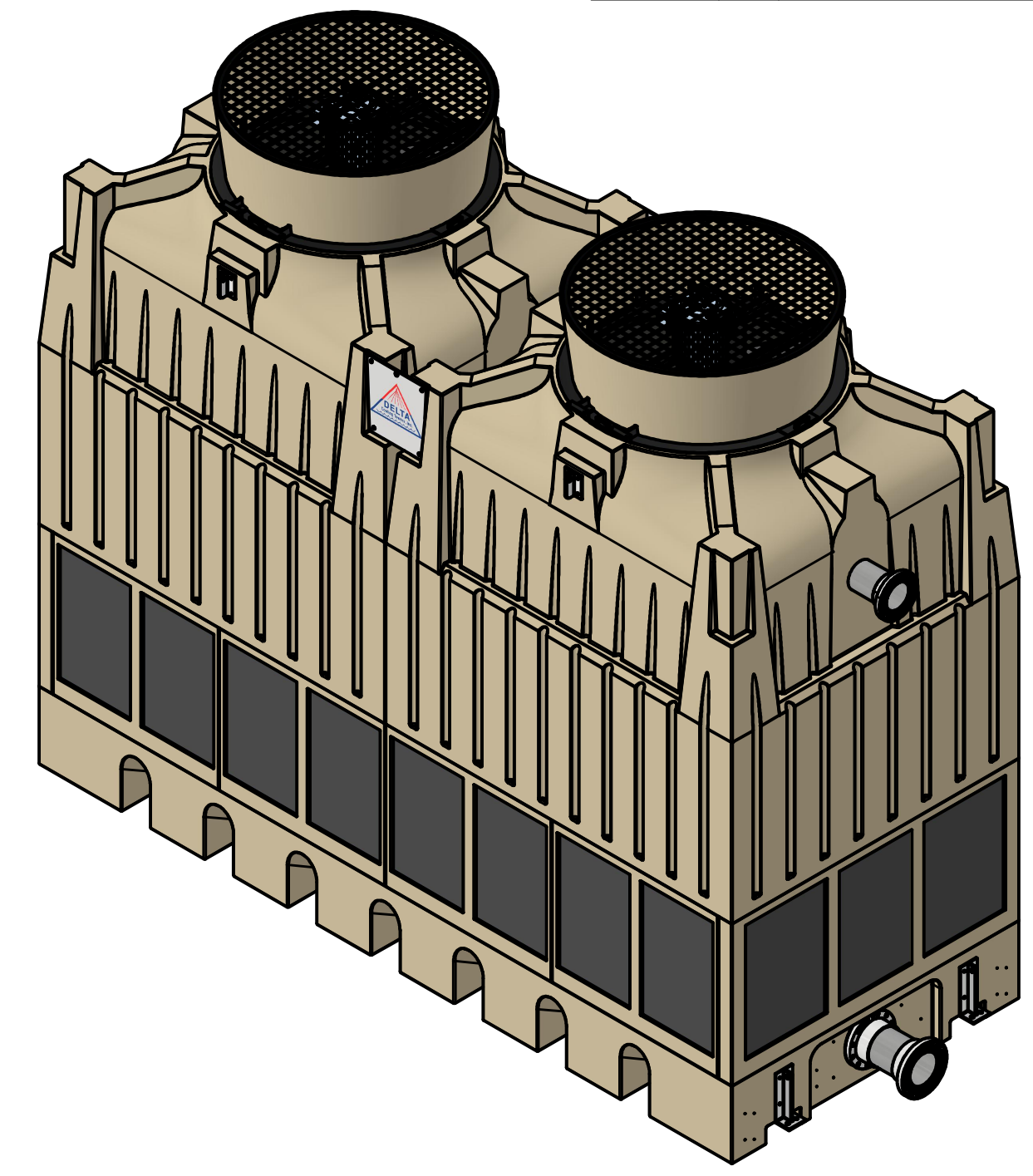
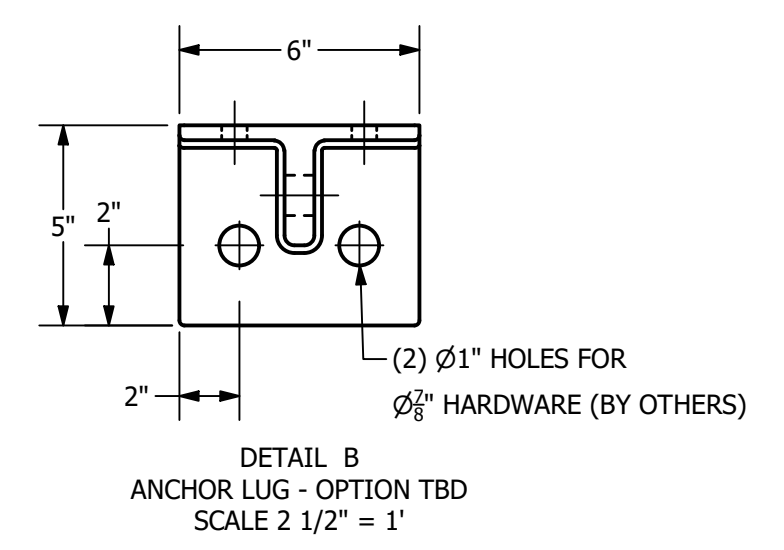
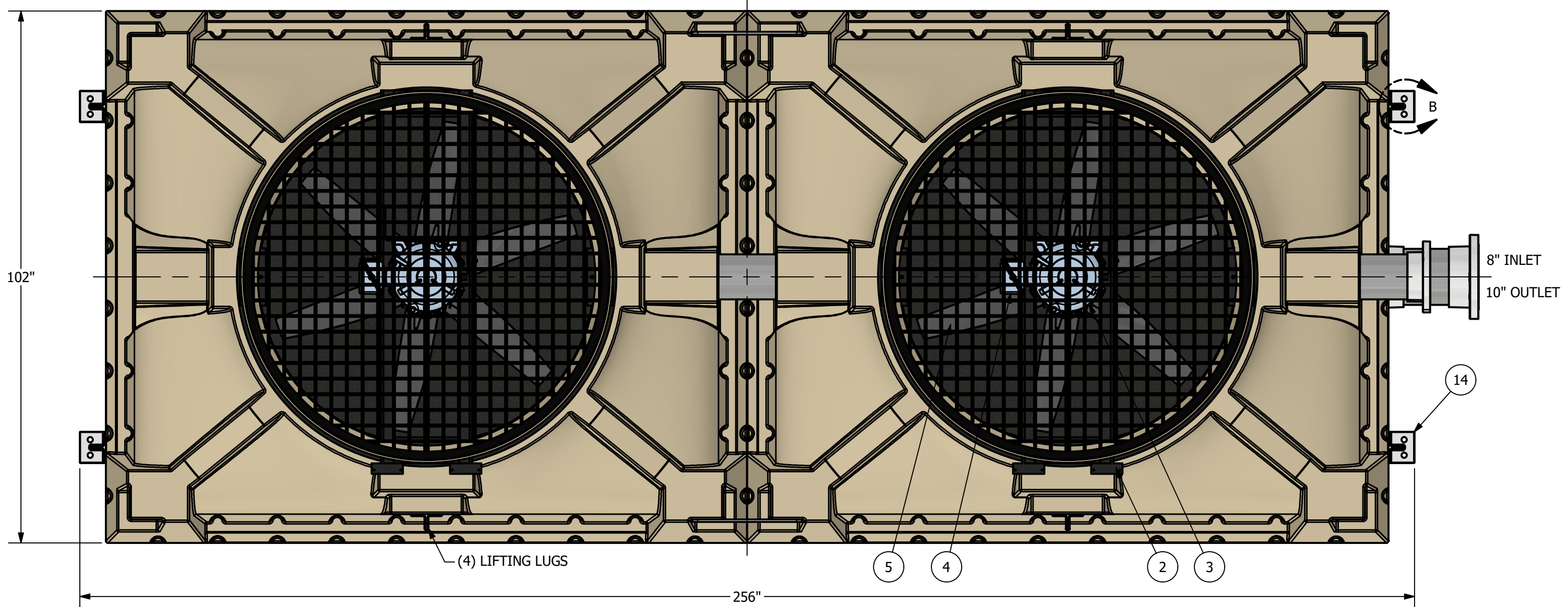


DATE	REV	DESCRIPTION	AUTH	CHK
2/28/2024	-	INITIAL DRAWING	FP	FP



- NOTES:**
- DIMENSIONS SHOWN ARE NOMINAL AND ARE SUBJECT TO FABRICATION TOLERANCES.
 - EXTERNAL PIPING MUST BE INDEPENDENTLY SUPPORTED.
 - PIPING AND BULKHEAD FITTING MATERIAL IS PVC UNLESS OTHERWISE NOTED.
 - HARDWARE MATERIAL IS TYPE 304 STAINLESS STEEL.
 - MAXIMUM INLET WATER TEMPERATURE IS 140°F. (CONSULT FACTORY FOR HIGHER TEMPERATURE APPLICATIONS).
 - ALL DIMENSIONS ARE IN INCHES.
 - ALL WEIGHTS ARE IN POUNDS. DRY WEIGHT INCLUDES; FAN ASSEMBLY AND TOWER COMPLETE / OPERATING WEIGHT INCLUDES A FULL SUMP.
 - TOWER MOUNTING OPTION #1 - CONCRETE PAD - ENTIRE TOWER BASIN BOTTOM SURFACE TO BE FULLY SUPPORTED BY AN APPROPRIATELY SIZED CONCRETE PAD.
 - TOWER MOUNTING OPTION #2 - BEAM SUPPORTED VIA I-BEAM POCKETS - * SUPPORT BEAMS AND ANCHOR BOLTS ARE TO BE FURNISHED BY OTHERS. * BEAMS SHOULD HAVE A MINIMUM TOP FLANGE WIDTH OF 8" 9 8"x31# RECOMMENDED) AND BE IN ACCORDANCE WITH ACCEPTABLE STRUCTURAL DESIGN PRACTICES. THESE BEAMS SHOULD BE LOCATED IN THE INTEGRALLY MOLDED I-BEAM POCKETS AND SHOULD OVER-FUN THE LENGTH OF THE TOWER. *DO NOT WELD OR BOLT DOWN BEAMS PRIOR TO SETTING THE COOLING TOWER SUMP(S).
 - FINAL YARD PIPING TO AND FROM THE TOWER SHOULD BE FABRICATED FOLLOWING INSTALLATION OF THE TOWERS ONSITE. DUE TO MANUFACTURING AND INSTALLATION TOLERANCES, PREFABRICATION OF EXTERNAL PIPING IS NOT RECOMMENDED.

ITEM	QTY	DESCRIPTION	MATERIAL	REMARKS
15	1	FLOAT VALVE	POLYPROPYLENE	NOT SHOWN
14	4	ANCHOR LUGS	ALUMINUM	LOCATION TBD
13	1	VORTEX BREAKER	PVC	NOT SHOWN
12	1	OUTLET STRAINER	PVC COATED	NOT SHOWN
11	22	LOUVER PANEL	PVC	
10	2	FILL MEDIA	PVC	NOT SHOWN
9	2	FILL SUPPORT	FRP	NOT SHOWN
8	2	MIST ELIMINATOR	PVC	NOT SHOWN
7	1	WATER DISTRIBUTION SYSTEM	PVC	
6	2	VELOCITY RECOVERY STACK	POLYETHYLENE	WITH SCREEN
5	2	PROPELLER	FRP/POLYPRO.	
4	2	ELECTRICAL CONNECTION	ALUMINUM	
3	2	MOTOR	ALUM. / STEEL	TEAO, 900 RPM
2	2	FAN RING	COATED STEEL	
1	1	TOWER SHELL	POLYETHYLENE	

BILL OF MATERIALS				
DESIGN CONDITIONS				
FLOW RATE	TBD	GPM		
INLET TEMP	TBD	°F		
OUTLET TEMP	TBD	°F		
WET BULB	TBD	°F		
ELECTRICAL	TBD			

TOTAL HP	SEE MODEL
DRY WT.	7,800 LBS
OPER. WT. (FULL SUMP)	14,640 LBS
OPER. WT. (B OUTLET)	10,140 LBS
SUMP CAPACITY	576 GALLONS

DELTA COOLING TOWERS INC.
 185 US HIGHWAY 206 ROXBURY TOWNSHIP, NJ 07836
 PH: 973-586-2201 FAX: 973-586-2243

1 CELL TMX SALES ASSEMBLY

INFORMATION CONTAINED HEREIN IS SUBJECT TO CHANGE WITHOUT NOTICE IN THE INTEREST OF PRODUCT IMPROVEMENT.

DATE 2/28/2024