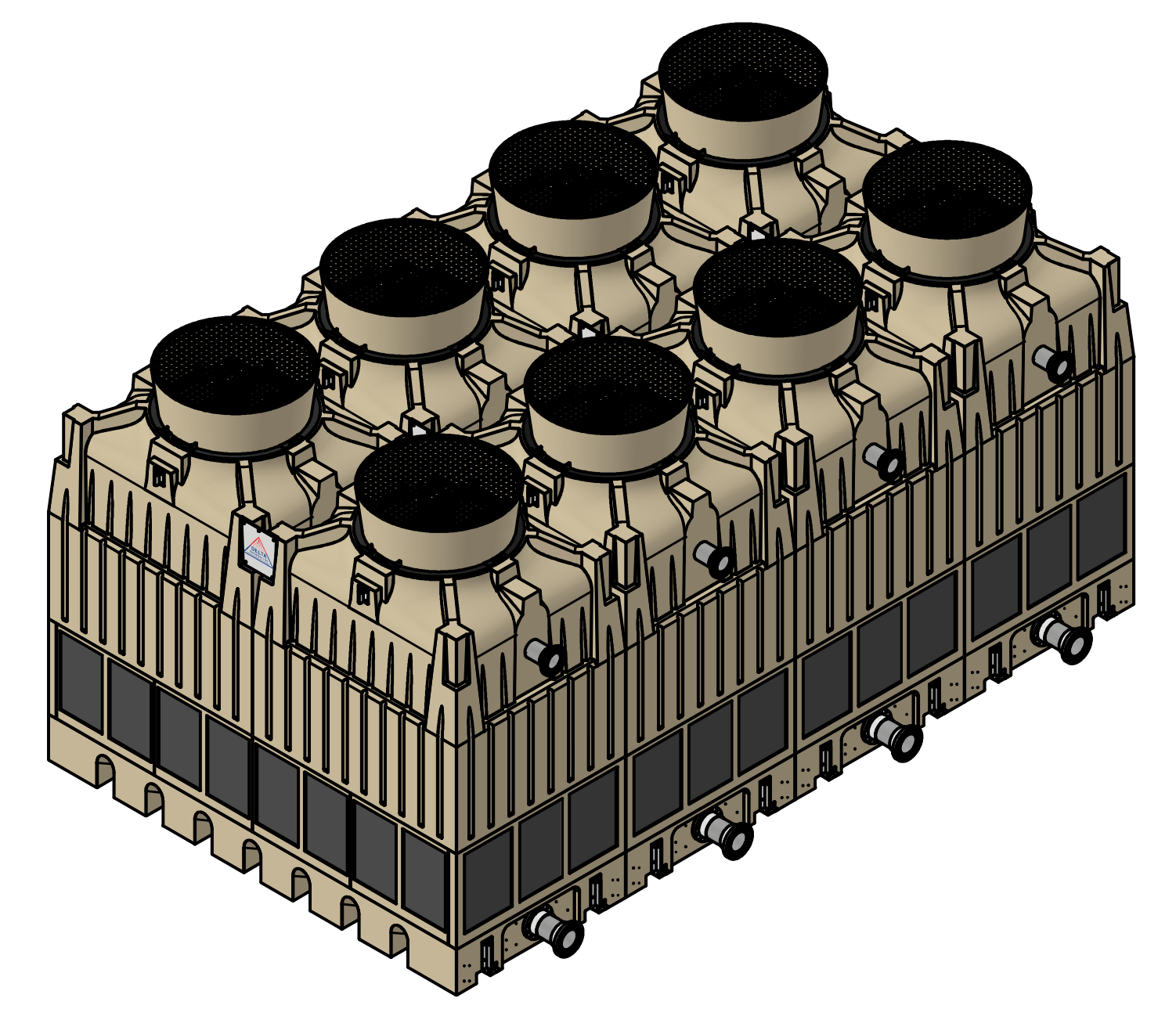
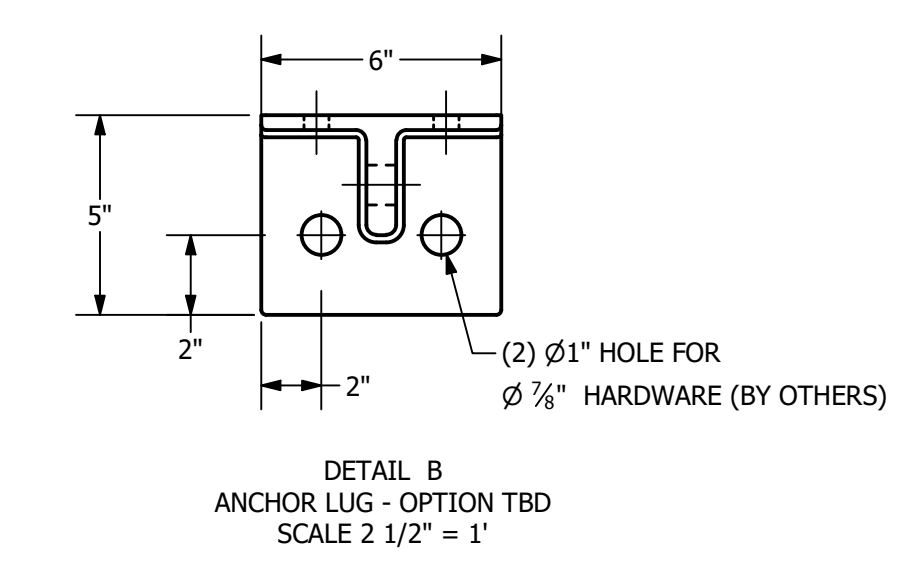
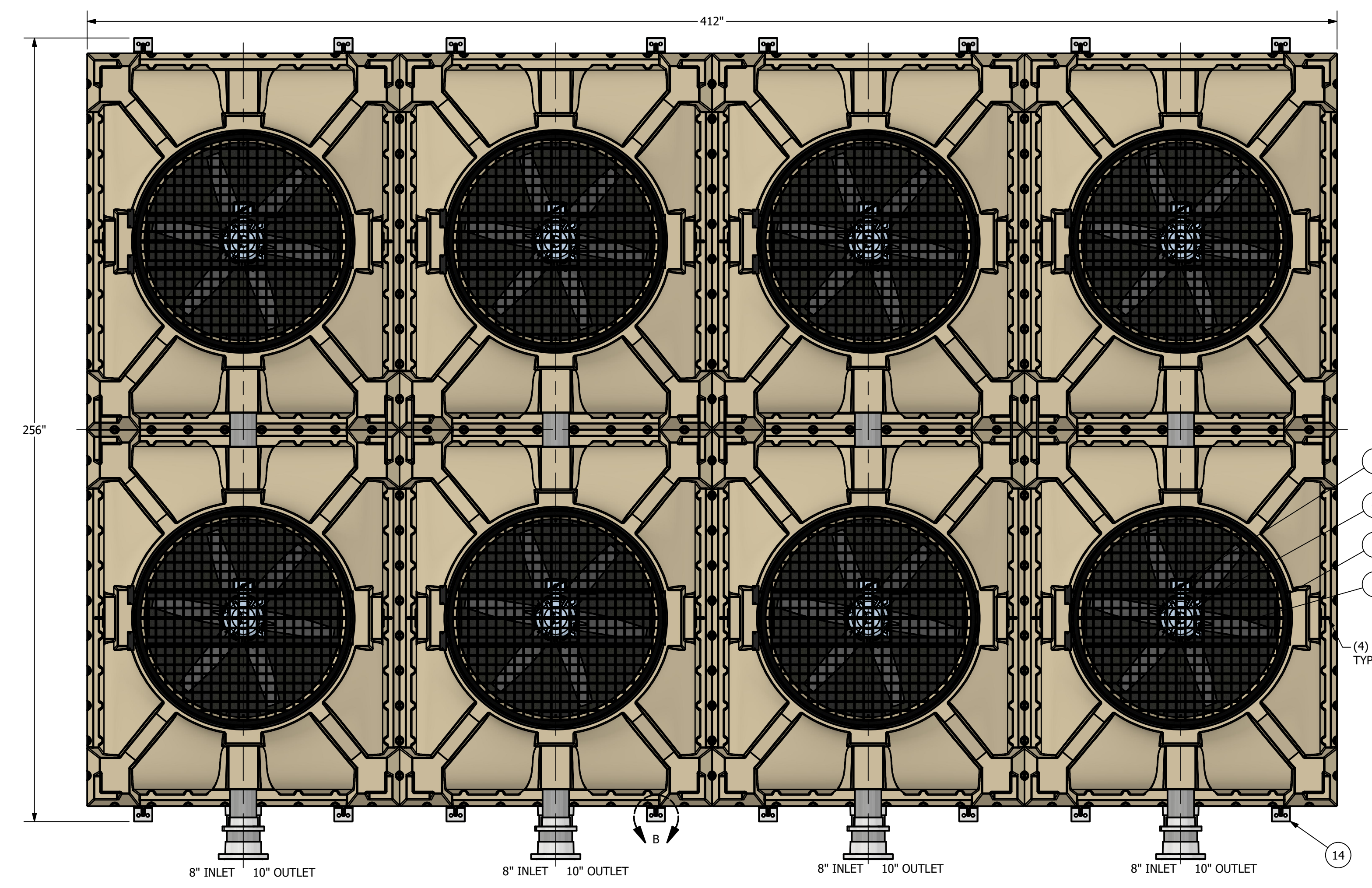
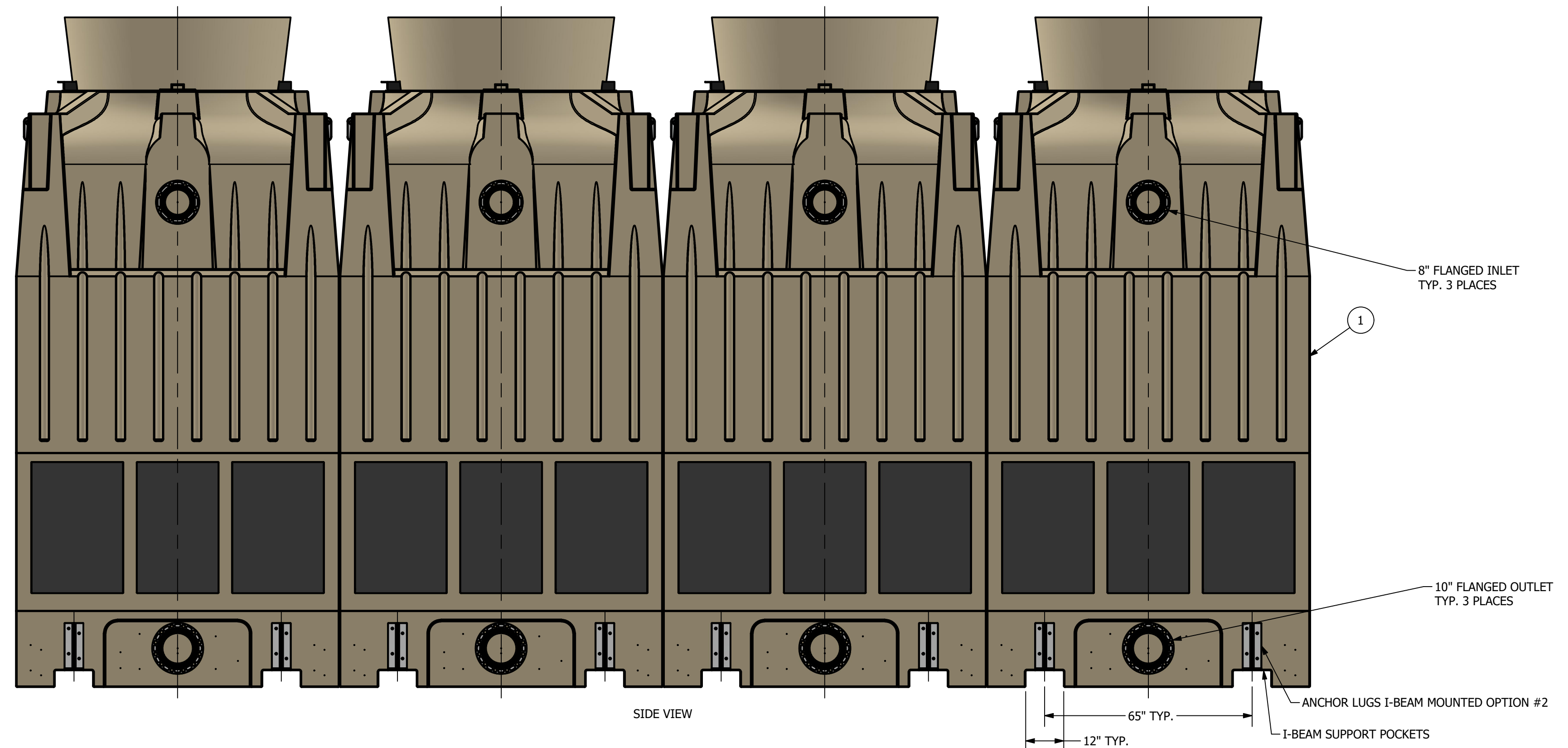


DATE	REV	DESCRIPTION	AUTH	CHK
5/7/2024	-	INITIAL DRAWING	FP	FP



- NOTES:**
- DIMENSIONS SHOWN ARE NOMINAL AND ARE SUBJECT TO FABRICATION TOLERANCES.
 - EXTERNAL PIPING MUST BE INDEPENDENTLY SUPPORTED.
 - PIPING AND BULKHEAD FITTING MATERIAL IS PVC UNLESS OTHERWISE NOTED.
 - HARDWARE MATERIAL IS TYPE 304 STAINLESS STEEL.
 - MAXIMUM INLET WATER TEMPERATURE IS 140°F. (CONSULT FACTORY FOR HIGHER TEMPERATURE APPLICATIONS).
 - ALL DIMENSIONS ARE IN INCHES.
 - ALL WEIGHTS ARE IN POUNDS. DRY WEIGHT INCLUDES; FAN ASSEMBLY AND TOWER COMPLETE / OPERATING WEIGHT INCLUDES A FULL SUMP.
 - TOWER MOUNTING OPTION #1 - CONCRETE PAD - ENTIRE TOWER BASIN BOTTOM SURFACE TO BE FULLY SUPPORTED BY AN APPROPRIATELY SIZED CONCRETE PAD.
 - TOWER MOUNTING OPTION #2 - BEAM SUPPORTED VIA I-BEAM POCKETS - * SUPPORT BEAMS AND ANCHOR BOLTS ARE TO BE FURNISHED BY OTHERS. * BEAMS SHOULD HAVE A MINIMUM TOP FLANGE WIDTH OF 8" 9 8"X31# RECOMMENDED) AND BE IN ACCORDANCE WITH ACCEPTABLE STRUCTURAL DESIGN PRACTICES. THESE BEAMS SHOULD BE LOCATED IN THE INTEGRALLY MOLDED I-BEAM POCKETS AND SHOULD OVER-RUN THE LENGTH OF THE TOWER. *DO NOT WELD OR BOLT DOWN BEAMS PRIOR TO SETTING THE COOLING TOWER SUMP(S).
 - FINAL YARD PIPING TO AND FROM THE TOWER SHOULD BE FABRICATED FOLLOWING INSTALLATION OF THE TOWERS ONSITE. DUE TO MANUFACTURING AND INSTALLATION TOLERANCES, PREFABRICATION OF EXTERNAL PIPING IS NOT RECOMMENDED.
 - SEE DRAWING DCT-TMX_4C-SSD-001-2 FOR ELEVATION VIEW.



ITEM	QTY	DESCRIPTION	MATERIAL	REMARKS
15	4	FLOAT VALVE	POLYPROPYLENE	NOT SHOWN
14	16	ANCHOR LUGS	ALUMINUM	LOCATION TBD
13	4	VORTEX BREAKER	PVC	NOT SHOWN
12	4	OUTLET STRAINER	PVC COATED	NOT SHOWN
11	40	LOUVER PANEL	PVC	
10	8	FILL MEDIA	PVC	NOT SHOWN
9	8	FILL SUPPORT	FRP	NOT SHOWN
8	8	MIST ELIMINATOR	PVC	NOT SHOWN
7	4	WATER DISTRIBUTION SYSTEM	PVC	
6	8	VELOCITY RECOVERY STACK	POLYETHYLENE	WITH SCREEN
5	8	PROPELLER	FRP/POLYPRO.	
4	8	ELECTRICAL CONNECTION	ALUMINUM	
3	8	MOTOR	ALUM. / STEEL	TEAO, 900 RPM
2	8	FAN RING	COATED STEEL	
1	4	TOWER SHELL	POLYETHYLENE	

DESIGN CONDITIONS		BILL OF MATERIALS	
FLOW RATE	TBD GPM	DELTA COOLING TOWERS INC.	
INLET TEMP	TBD °F	185 US HIGHWAY 206 ROXBURY TOWNSHIP, NJ 07836	
OUTLET TEMP	TBD °F	PH: 973-586-2201 FAX: 973-586-2243	
WET BULB	TBD °F	TITLE: 4 CELL TMX SALES ASSEMBLY	
ELECTRICAL	TBD	TMX SERIES	
INFORMATION CONTAINED HEREIN IS SUBJECT TO CHANGE WITHOUT NOTICE IN THE INTEREST OF PRODUCT IMPROVEMENT.		JOB # TBD	
SCALE 7/16" = 1'		CHECKED BY: Frank Pyszchacki	
DATE 5/7/2024	SIZE D	DCT-TMX_4C-SSD-001-1	

OPER. WT. (FULL SUMP)	SEE MODEL
59,040 LBS	31,680 LBS
OPER. WT. (B OUTLET)	41,040 LBS
SUMP CAPACITY	2,304 GALLONS