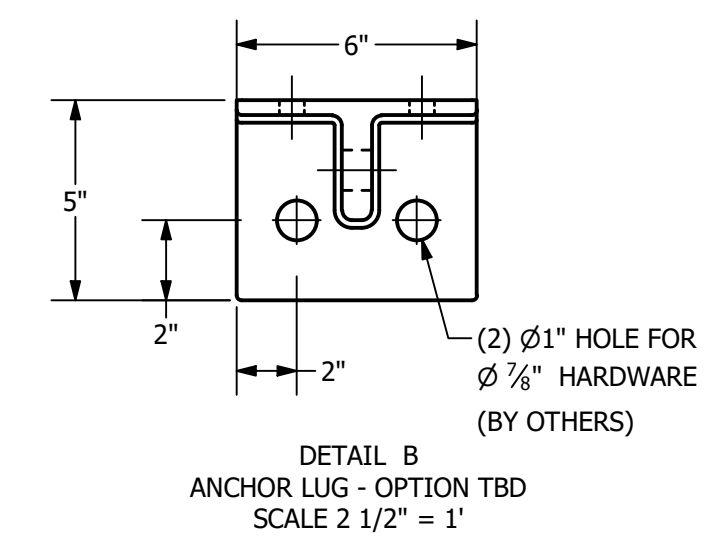
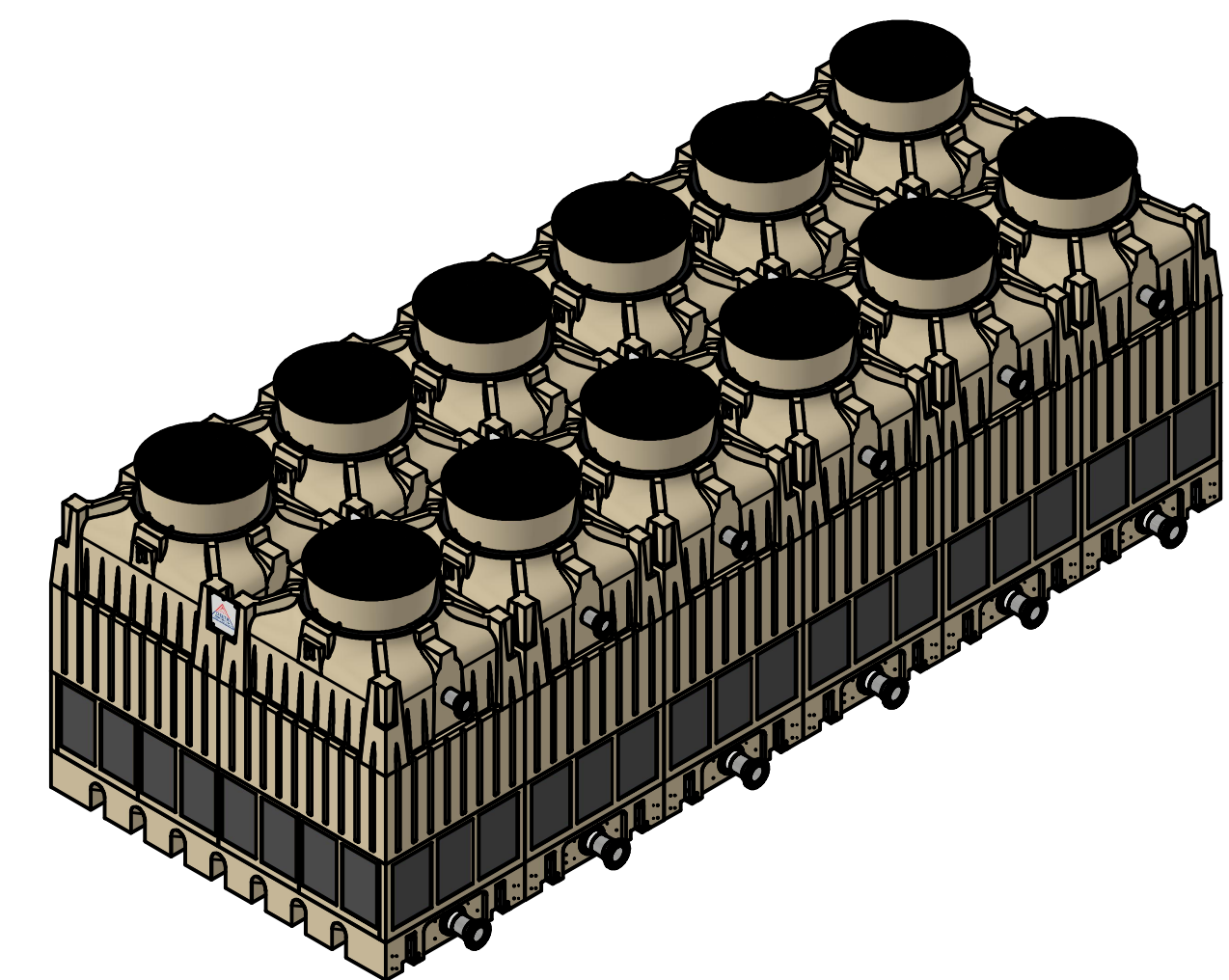
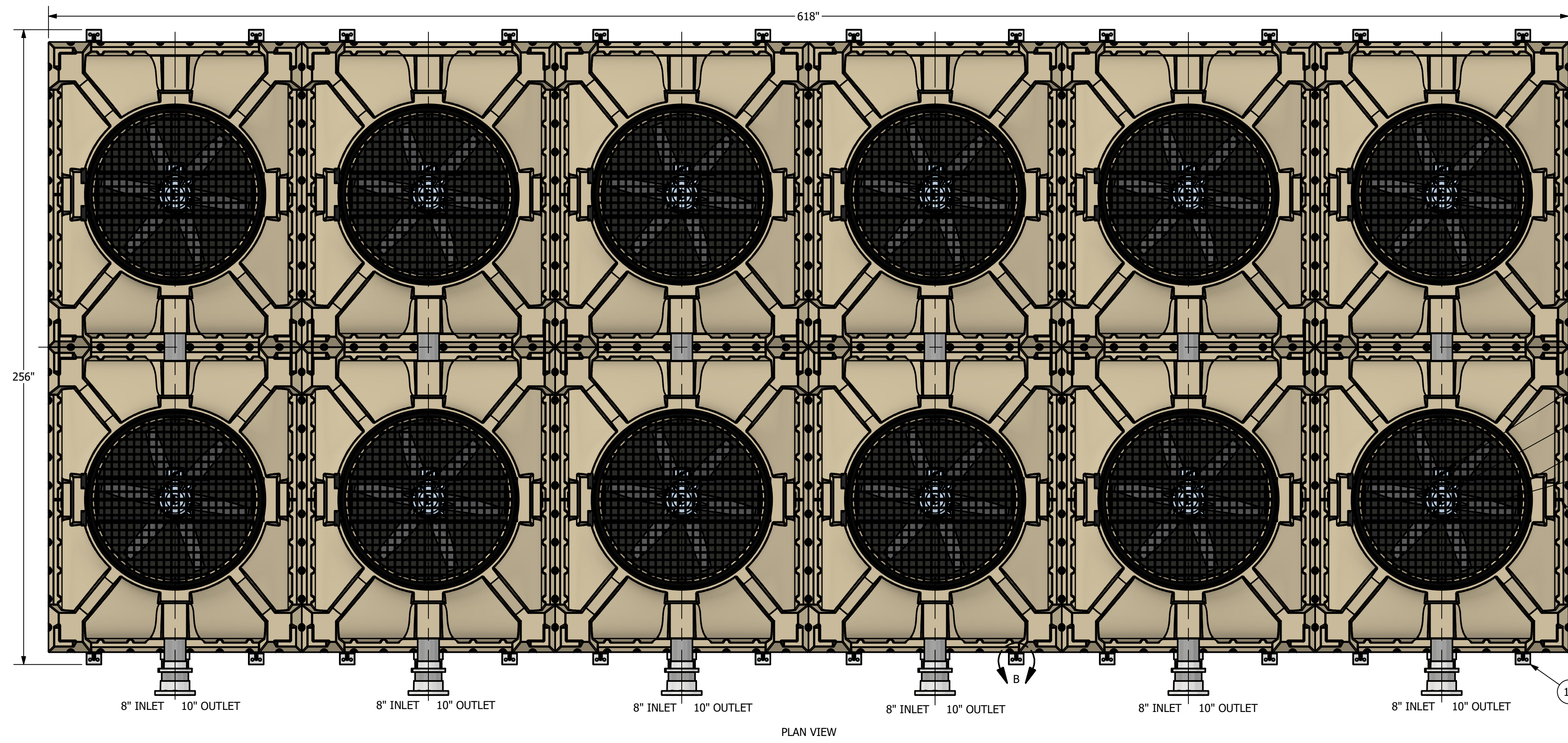
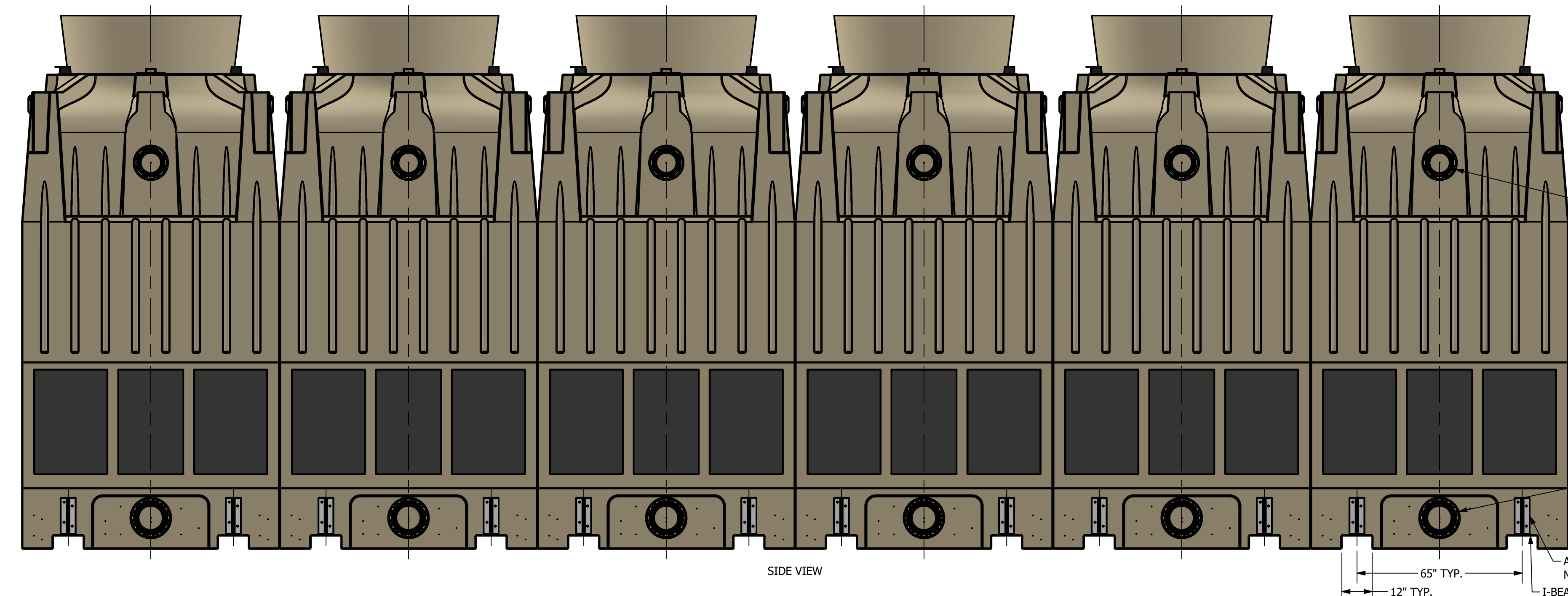


DATE	REV	DESCRIPTION	AUTH	CHK
5/7/2024	-	INITIAL DRAWING	FP	FP



- NOTES:
- DIMENSIONS SHOWN ARE NOMINAL AND ARE SUBJECT TO FABRICATION TOLERANCES.
  - EXTERNAL PIPING MUST BE INDEPENDENTLY SUPPORTED.
  - PIPING AND BULKHEAD FITTING MATERIAL IS PVC UNLESS OTHERWISE NOTED.
  - HARDWARE MATERIAL IS TYPE 304 STAINLESS STEEL.
  - MAXIMUM INLET WATER TEMPERATURE IS 140°F. (CONSULT FACTORY FOR HIGHER TEMPERATURE APPLICATIONS).
  - ALL DIMENSIONS ARE IN INCHES.
  - ALL WEIGHTS ARE IN POUNDS. DRY WEIGHT INCLUDES; FAN ASSEMBLY AND TOWER COMPLETE / OPERATING WEIGHT INCLUDES A FULL SUMP.
  - TOWER MOUNTING OPTION #1 - CONCRETE PAD - ENTIRE TOWER BASIN BOTTOM SURFACE TO BE FULLY SUPPORTED BY AN APPROPRIATELY SIZED CONCRETE PAD.
  - TOWER MOUNTING OPTION #2 - BEAM SUPPORTED VIA I-BEAM POCKETS - \* SUPPORT BEAMS AND ANCHOR BOLTS ARE TO BE FURNISHED BY OTHERS. \* BEAMS SHOULD HAVE A MINIMUM TOP FLANGE WIDTH OF 8" 9 8"X31# RECOMMENDED) AND BE IN ACCORDANCE WITH ACCEPTABLE STRUCTURAL DESIGN PRACTICES. THESE BEAMS SHOULD BE LOCATED IN THE INTEGRALLY MOLDED I-BEAM POCKETS AND SHOULD OVER-FUN THE LENGTH OF THE TOWER. \*DO NOT WELD OR BOLT DOWN BEAMS PRIOR TO SETTING THE COOLING TOWER SUMP(S).
  - FINAL YARD PIPING TO AND FROM THE TOWER SHOULD BE FABRICATED FOLLOWING INSTALLATION OF THE TOWERS ONSITE. DUE TO MANUFACTURING AND INSTALLATION TOLERANCES, PREFABRICATION OF EXTERNAL PIPING IS NOT RECOMMENDED.
  - SEE DRAWING DCT-TMX\_6C-SSD-001-2 FOR ELEVATION VIEW.



ITEM	QTY	DESCRIPTION	MATERIAL	REMARKS
15	6	FLOAT VALVE	POLYPROPYLENE	NOT SHOWN
14	24	ANCHOR LUGS	ALUMINUM	LOCATION TBD
13	6	VORTEX BREAKER	PVC	NOT SHOWN
12	6	OUTLET STRAINER	PVC COATED	NOT SHOWN
11	52	LOUVER PANEL	PVC	
10	12	FILL MEDIA	PVC	NOT SHOWN
9	12	FILL SUPPORT	FRP	NOT SHOWN
8	12	MIST ELIMINATOR	PVC	NOT SHOWN
7	6	WATER DISTRIBUTION SYSTEM	PVC	
6	12	VELOCITY RECOVERY STACK	POLYETHYLENE	WITH SCREEN
5	12	PROPELLER	FRP/POLYPRO.	
4	12	ELECTRICAL CONNECTION	ALUMINUM	
3	12	MOTOR	ALUM. / STEEL	TEAO, 900 RPM
2	12	FAN RING	COATED STEEL	
1	6	TOWER SHELL	POLYETHYLENE	

DESIGN CONDITIONS	VALUE
FLOW RATE	TBD GPM
INLET TEMP	TBD °F
OUTLET TEMP	TBD °F
WET BULB	TBD °F
ELECTRICAL	TBD

**DELTA COOLING TOWERS INC.**  
185 US HIGHWAY 206 ROXBURY TOWNSHIP, NJ 07836  
PH: 973-586-2201 FAX: 973-586-2243

**6 CELL TMX SALES ASSEMBLY**

TMX SERIES  
JOB # TBD

INFORMATION CONTAINED HEREIN IS SUBJECT TO CHANGE WITHOUT NOTICE IN THE INTEREST OF PRODUCT IMPROVEMENT.

SCALE 3/8"=1"  
DATE 5/7/2024

SIZE DWG NO  
D DCT-TMX\_6C-SSD-001-1

REV  
-

OPER. WT. (FULL SUMP)	SEE MODEL
88,560 LBS	47,520 LBS
61,560 LBS	3,456 GALLONS