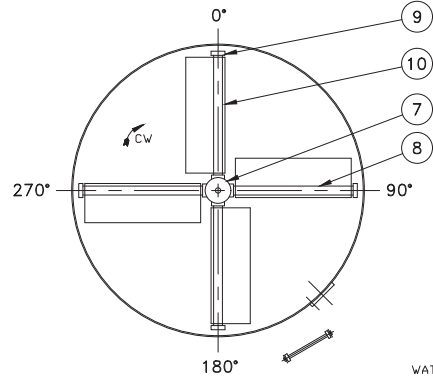
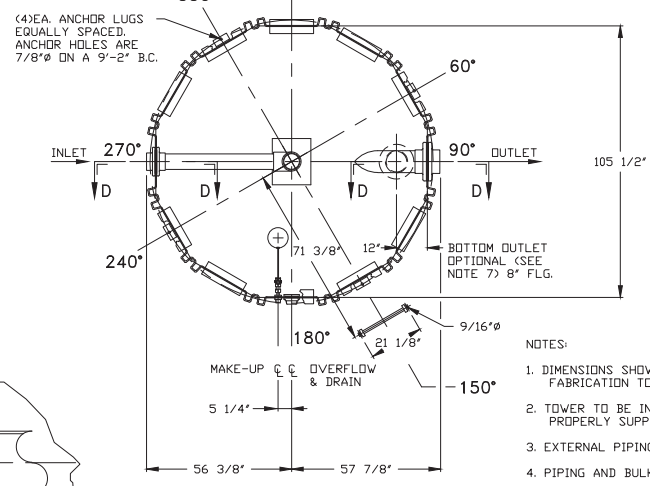


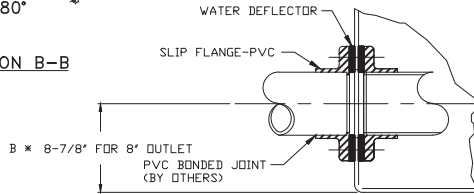
VIEW C-C



SECTION B-B



SECTION A-A
(SEE NOTE 1)

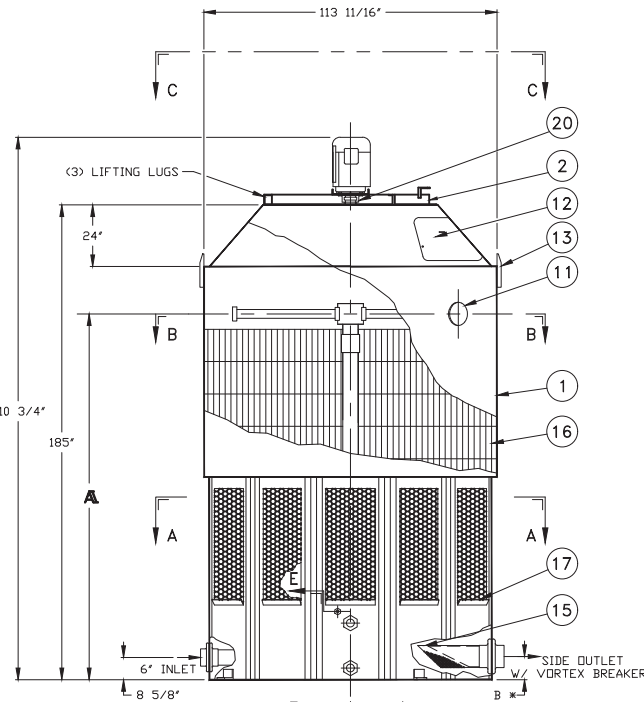


SECTION D-D
INLET & OUTLET

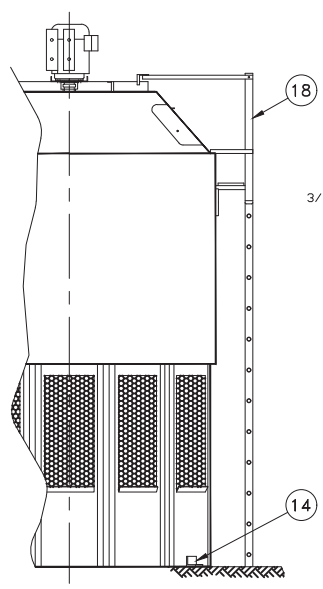
⚠ * OUTLET SIZE & ELEVATION TO BE VERIFIED BASED ON FINAL DESIGN CONSIDERATIONS

DATE	SYM	REVISION	AUTHOR
9/20/96	A	DRAWN IN ACAD	ACW/P
7/27/98	B	REV. FAN RING & DIM.	W/P
12/12/00	C	ADDED NOTE 12	B/DJF
5/22/02	D	REV. FAN ASSEMBLY	B/DJF
10/25/07	E	REVISED ELIMINATOR BLADES	KF/UBH
11/14/08	F	REVISED MANWAY COVER	KF/UBH
6/1/10	G	REVISED MAKE-UP	KF/UBH
6/10/10	H	REVISED MAKE-UP MATERIAL	KF/UBH
6/1/11	I	DPT H2O HAMMER ARRESER	LM/UBH
7/29/15	J	REV. MAKE-UP ASSEMBLY	MJ/UBH
2/9/16	K	ADDED OUTLET SIZING NOTE	SS/FP

- NOTES:
- DIMENSIONS SHOWN ARE NOMINAL AND ARE SUBJECT TO FABRICATION TOLERANCES.
 - TOWER TO BE INSTALLED ON A FLAT AND RIGID SURFACE, PROPERLY SUPPORTED.
 - EXTERNAL PIPING MUST BE INDEPENDENTLY SUPPORTED.
 - PIPING AND BULKHEAD FITTING MATERIAL IS PVC.
 - HARDWARE MATERIAL IS TYPE 304 STAINLESS STEEL.
 - FAN ASSEMBLY & SPRINKLER ARMS SHIPPED SEPARATELY FOR FIELD INSTALLATION.
 - FOR BOTTOM OUTLET MAXIMUM OPENING IN SUPPORT TO BE 19" X 19".
 - MAXIMUM INLET WATER TEMPERATURE 140°F. (CONSULT FACTORY FOR HIGHER TEMP. APPLICATIONS.)
 - SEE DWG. NO DT-D-80-755 FOR MULTICELL LAYOUT.
 - ALL DIMENSIONS ARE IN INCHES.
 - ALL WEIGHTS ARE IN POUNDS. DRY WT. INCLUDES; FAN ASSEMBLY, SINGLE SPEED MOTOR & TOWER COMPLETE. MAX. FAN WT. INCLUDES FAN ASSEMBLY AND TWO SPEED MOTOR.
 - RISER PIPE HAS 1/4" WEEP HOLE IN SUMP
 - OPTIONAL H2O HAMMER ARRESER MAY RELIEVE POTENTIAL WATER HAMMER DUE TO HIGH SUPPLY PRESSURE.

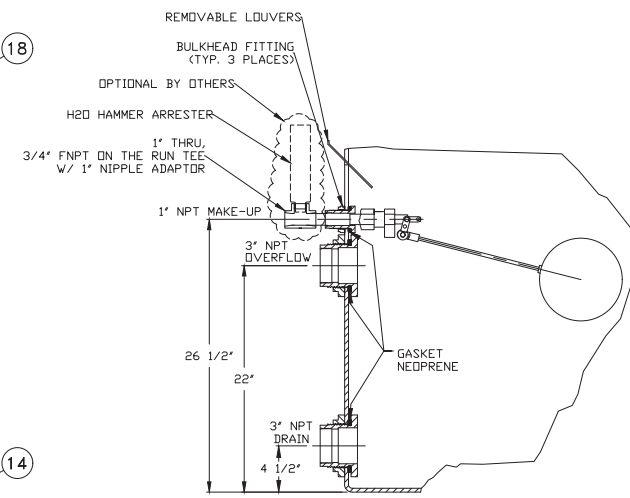


ELEVATION



VIEW F

⚠ * OUTLET SIZE & ELEVATION TO BE VERIFIED BASED ON FINAL DESIGN CONDITIONS



SECTION E-E

ITEM	QTY	PART NO.	DESCRIPTION	MATERIAL	REMARKS
21	1		H2O HAMMER ARREST	COPPER	OPTIONAL
20	1		VIBRATION SWITCH	STEEL	OPTIONAL
19	1		FLGAT VALVE	POLYPROPYLENE	
18	1		LADDER ASSEMBLY	ALUMINUM	OPTIONAL
17	1 SET		LOUVER PANEL	PVC	
16	1 SET		FILL	PVC	
15	1		STRAINER	PLASTIC	OPTIONAL
14	4		ANCHOR LUG	ALUMINUM	
13	2		LIFTING LUG	ALUMINUM	
12	1		MANHOLE COVER	POLYETHYLENE	
11	1		CLEAN-OUT PORT	POLYETHYLENE	
10	4		MIST ELIMINATOR	POLYETHYLENE	
9	4		PIPE CAP	PVC	
8	4		SPRINKLER PIPE	PVC	
7	1		SPRINKLER HEAD	PVC	
6	1		FAN GUARD	COATED STEEL	SPLIT
5	1		PROPELLER	POLYPROP/FRP	
4	1		ELECTRICAL CONN.	STEEL	
3	1		MOTOR	STEEL	TEAD, DIR. DRIVE
2	1		FAN RING	COATED STEEL	
1	1		TOWER SHELL	POLYETHYLENE	

DELTA COOLING TOWERS, INC.
 185 US HIGHWAY 206 ROXBURY TOWNSHIP NJ 07836
 PH 973.586.2201 FAX 973.586.2243



TOWER	ΔT 2001	ΔT 2501
HP	10	15
DRY WT.	2670	2815
OPER. WT.	8355	8500
DESIGN WT.	10855	11000
MAX. FAN WT.	570	610
	129 1/2"	142 1/8"

INFORMATION CONTAINED HEREIN IS SUBJECT TO CHANGE WITHOUT NOTICE IN THE INTEREST OF PRODUCT IMPROVEMENT.

TITLE: **ΔT 2001 AND ΔT 2501**
 DWN BY *Alexander Clemente*
 APPVD BY *W.A. Patterson*
 JOB#: **SCALE 1/2" = 1'-0"** DWG NO. **DT-D-80-754** REV. **K**
 DATE **9/20/96**