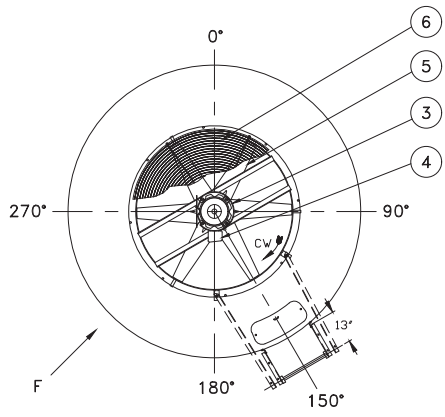
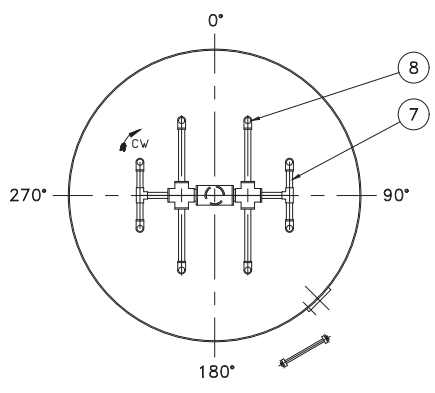


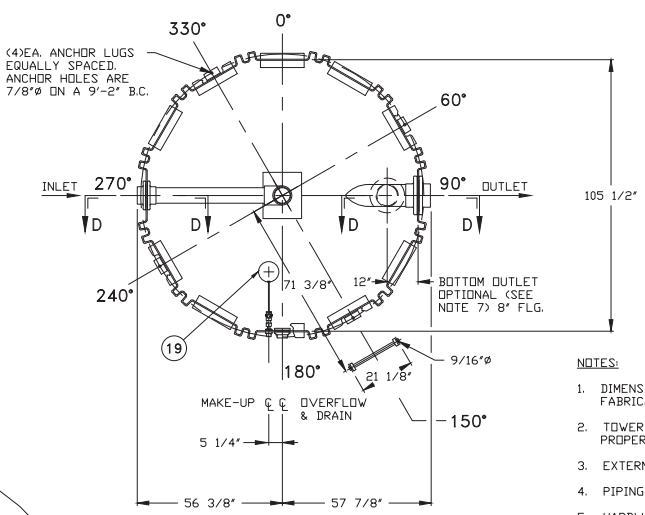
DATE	STM	REVISION	AUTHOR
2/11/08	-	INITIAL ISSUE	KF LJB
6/2/10	A	REVISED MAKE-UP STYLE	KF LJB
6/10/10	B	REVISED MAKE-UP MATERIAL	KF LJB
7/30/10	C	REVISED MAKE-UP ASSEMBLY	MLJBH
2/9/18	D	ADDED OUTLET SIZING NOTE	SSJFP



VIEW C-C

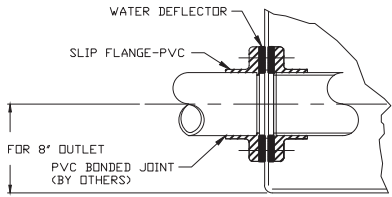


SECTION B-B

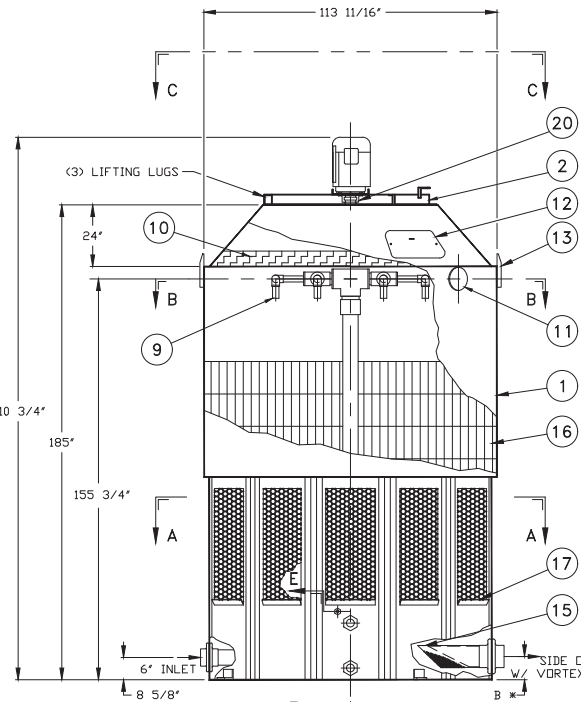


SECTION A-A  
(SEE NOTE 1)

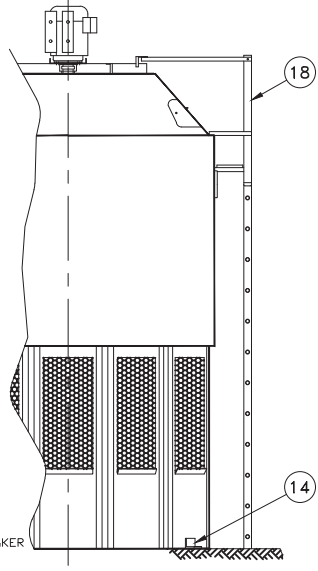
- NOTES:**
- DIMENSIONS SHOWN ARE NOMINAL AND ARE SUBJECT TO FABRICATION TOLERANCES.
  - TOWER TO BE INSTALLED ON A FLAT AND RIGID SURFACE, PROPERLY SUPPORTED.
  - EXTERNAL PIPING MUST BE INDEPENDENTLY SUPPORTED.
  - PIPING AND BULKHEAD FITTING MATERIAL IS PVC.
  - HARDWARE MATERIAL IS TYPE 304 STAINLESS STEEL.
  - FAN ASSEMBLY & SPRINKLER ARMS SHIPPED SEPARATELY FOR FIELD INSTALLATION.
  - FOR BOTTOM OUTLET MAXIMUM OPENING IN SUPPORT TO BE 19" x 19".
  - MAXIMUM INLET WATER TEMPERATURE 140°F. (CONSULT FACTORY FOR HIGHER TEMP. APPLICATIONS.)
  - SEE DWG. NO DT-D-80-755 FOR MULTICELL LAYOUT.
  - ALL DIMENSIONS ARE IN INCHES.
  - ALL WEIGHTS ARE IN POUNDS. DRY WT. INCLUDES; FAN ASSEMBLY, SINGLE SPEED MOTOR & TOWER COMPLETE. MAX. FAN WT. INCLUDES FAN ASSEMBLY AND TWO SPEED MOTOR.
  - RISER PIPE HAS 1/4" WEEP HOLE IN SUMP.



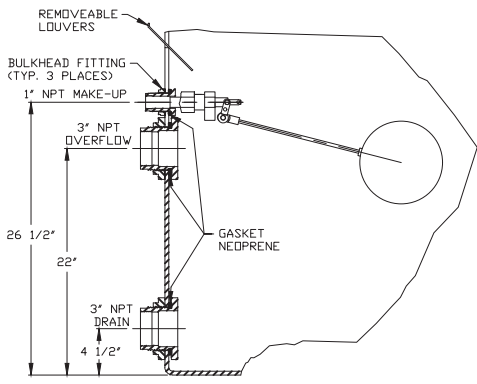
SECTION D-D  
INLET & OUTLET  
\* OUTLET SIZE & ELEVATION TO BE VERIFIED BASED ON FINAL DESIGN CONSIDERATIONS



ELEVATION



VIEW F



SECTION E-E

ITEM	QTY	PART NO.	DESCRIPTION	MATERIAL	REMARKS
20	1		VIBRATION SWITCH	STEEL	OPTIONAL
19	1		FLGAT VALVE	POLYPROPYLENE	
18	1		LADDER ASSEMBLY	ALUMINUM	OPTIONAL
17	1 SET		LOUVER PANEL	PVC	
16	3 1/2		FILL	PVC	
15	1		STRAINER	PLASTIC	OPTIONAL
14	4		ANCHOR LUG	ALUMINUM	
13	2		LIFTING LUG	ALUMINUM	
12	1		MANHOLE COVER	POLYETHYLENE	
11	1		CLEAN-OUT PORT	POLYETHYLENE	
10	1		MIST ELIMINATOR	POLYETHYLENE	
9	8		NOZZLES	PVC	
8	8		90° ELBOWS	PVC	
7	1		PIPING ASSEMBLY	PVC	
6	1		FAN GUARD	COATED STEEL	SPLIT
5	1		PROPELLER	POLYPROP/FRP	
4	1		ELECTRICAL CONN.	STEEL	
3	1		MOTOR	STEEL	TEAD, DIR. DRIVE
2	1		FAN RING	COATED STEEL	
1	1		TOWER SHELL	POLYETHYLENE	

**DELTA COOLING TOWERS, INC.**  
185 US HIGHWAY 206 ROXBURY TOWNSHIP NJ 07836  
PH 973.586.2201 FAX 973.586.2243



TITLE  $\Delta T$  2001 AND  $\Delta T$  2501  
w/ FIXED SPRAY HEADER  
DWN BY Kevin Fitzpatrick  
APPVD BY Joe Romo  
JOB#  
SCALE 1/2" = 1'-0"  
DATE 2/11/08

	$\Delta T$ 2001	$\Delta T$ 2501
TOWER	10	15
HP	2670	2815
DRY WT.	8355	8500
OPER. WT.	10855	11000
DESIGN WT.	570	610
MAX. FAN WT.		

INFORMATION CONTAINED HEREIN IS SUBJECT TO CHANGE WITHOUT NOTICE IN THE INTEREST OF PRODUCT IMPROVEMENT.  
OUTLET SIZE TO BE VERIFIED BASED ON FINAL DESIGN CONDITIONS.



REV. D

DWG NO. DT-D-80-901