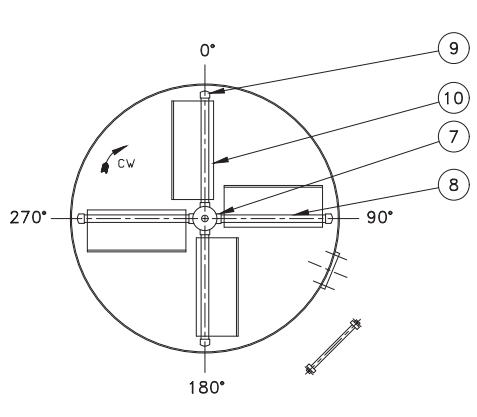
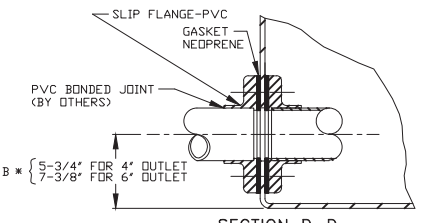


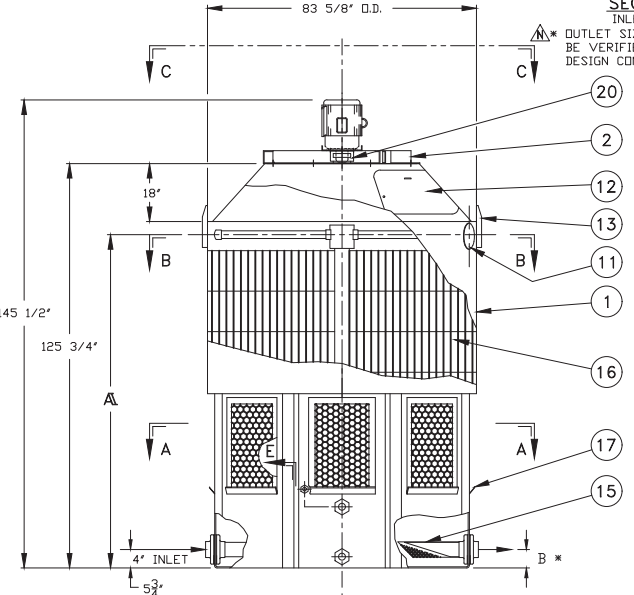
VIEW C-C



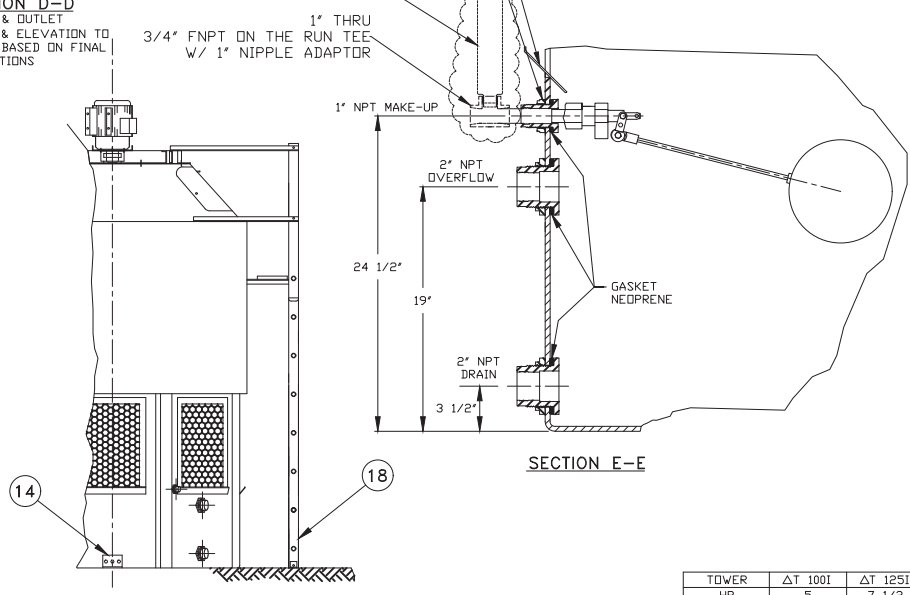
SECTION B-B



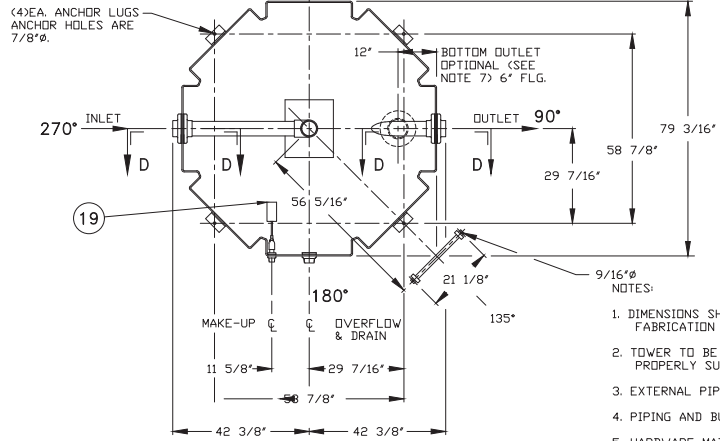
SECTION D-D



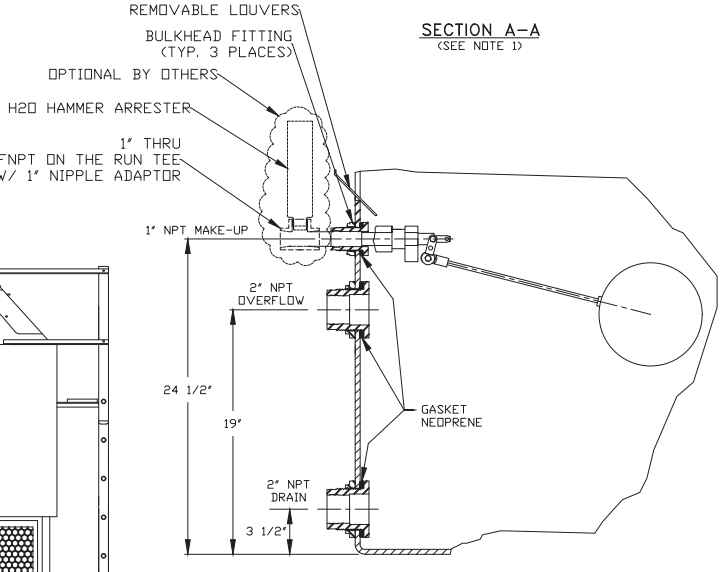
ELEVATION



VIEW F



SECTION A-A  
(SEE NOTE 1)



SECTION E-E

DATE	STM	REVISION	AUTHOR
9/20/96	A	DRAWN IN ACAD	ACW/P
7/23/98	B	REV. FAN RING & DIM.	BDW/P
10/11/99	C	REV. SECT E-E DIM	BDJ
12/12/00	D	ADDED NOTE 12	BDJ/F
9/26/01	E	REV. SHELL HT. FROM 137 3/4"	BDJ/F
5/23/02	F	REV. FAN ASSEMBLY	BDJ/F
5/4/07	G	REVISED A DIMENSION	KF/UB
10/25/07	H	REVISED ELIMINATOR BLADES	KF/UB
11/14/08	I	REVISED MANWAY SIZE	KF/UB
6/7/10	J	REVISED MAKE-UP	KF/UB
6/10/10	K	REVISED MAKE-UP MATERIAL	KF/UB
6/3/11	L	OPT H2O HAMMER ARRESTER	LM/UB
7/29/15	M	REV. MAKE-UP ASSEMBLY	MJ/UB
2/28/18	N	ADDED OUTLET SIZING NOTE	SS/P

- DIMENSIONS SHOWN ARE NOMINAL AND ARE SUBJECT TO FABRICATION TOLERANCES.
- TOWER TO BE INSTALLED ON A FLAT AND RIGID SURFACE, PROPERLY SUPPORTED.
- EXTERNAL PIPING MUST BE INDEPENDENTLY SUPPORTED.
- PIPING AND BULKHEAD FITTING MATERIAL IS PVC.
- HARDWARE MATERIAL IS TYPE 304 STAINLESS STEEL.
- FAN ASSEMBLY & SPRINKLER ARMS SHIPPED SEPARATELY FOR FIELD INSTALLATION.
- FOR BOTTOM OUTLET MAXIMUM OPENING IN SUPPORT TO BE 14" X 14".
- MAXIMUM INLET WATER TEMPERATURE 140°F. (CONSULT FACTORY FOR HIGHER TEMP. APPLICATIONS.)
- SEE DWG. NO DT-D-80-755 FOR MULTICELL LAYOUT.
- ALL DIMENSIONS ARE IN INCHES.
- ALL WEIGHTS ARE IN POUNDS, DRY WT. INCLUDES: FAN ASSEMBLY, SINGLE SPEED MOTOR & TOWER COMPLETE. MAX. FAN WT. INCLUDES FAN ASSEMBLY AND TWD SPEED MOTOR.
- RISER PIPE HAS 1/4" WEEP HOLE IN SUMP
- OPTIONAL H2O HAMMER ARRESTER MAY RELIEVE POTENTIAL WATER HAMMER DUE TO HIGH SUPPLY PRESSURE.

ITEM	QTY	PART NO.	DESCRIPTION	MATERIAL	REMARKS
21	1		H2O HAMMER ARREST.	COPPER	OPTIONAL
20	1		VIBRATION SWITCH	STEEL	OPTIONAL
19	1		FLDGT VALVE	POLYPROPYLENE	OPTIONAL
18	1		LADDER ASSEMBLY	ALUMINUM	OPTIONAL
17	1 SET		LOUVER	PVC	
16	1 SET		FILL	PVC	
15	1		STRAINER	PLASTIC	OPTIONAL
14	4		ANCHOR LUG	ALUMINUM	
13	2		LIFTING LUG	ALUMINUM	
12	1		MANHOLE COVER	POLYETHYLENE	
11	1		CLEAN-OUT PORT	POLYETHYLENE	
10	4		MIST ELIMINATOR	POLYETHYLENE	
9	4		PIPE CAP	PVC	
8	4		SPRINKLER PIPE	PVC	
7	1		SPRINKLER HEAD	PVC	
6	1		FAN GUARD	COATED STEEL	
5	1		PROPELLER	POLYPROP/FRP	
4	1		ELECTRICAL BOX	ALUMINUM	
3	1		MOTOR	ALUM./STL.	
2	1		FAN RING	COATED STEEL	
1	1		TOWER SHELL	POLYETHYLENE	

BILL OF MATERIALS

TOWER	ΔT 1001	ΔT 1251
HP	5	7 1/2
DRY WT.	1330	1410
OPER. WT.	4185	4260
DESIGN WT.	6000	6075
MAX. FAN WT.	273	292
A	101 1/2"	101 1/2"

INFORMATION CONTAINED HEREIN IS SUBJECT TO CHANGE WITHOUT NOTICE IN THE INTEREST OF PRODUCT IMPROVEMENT.

OUTLET SIZE TO BE VERIFIED BASED ON FINAL DESIGN CONDITIONS



**DELTA COOLING TOWERS, INC.**  
185 US HIGHWAY 206 ROXBURY TOWNSHIP NJ 07836  
PH 973.586.2201 FAX 973.586.2243

TITLE ΔT 1001 AND ΔT 1251

DWN BY Alexander Clemente  
APPYD BY W.A. Patterson  
SCALE 5/8"=1'-0" DWG NO.  
DATE 9/20/96 REV. NO. DT-D-81-754 N