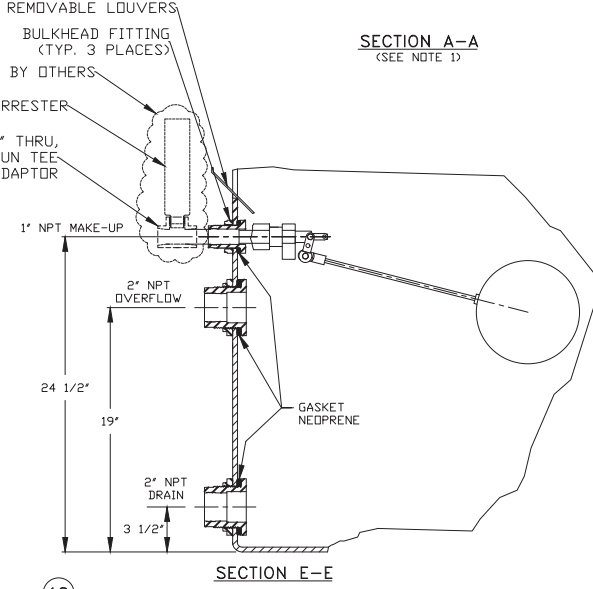
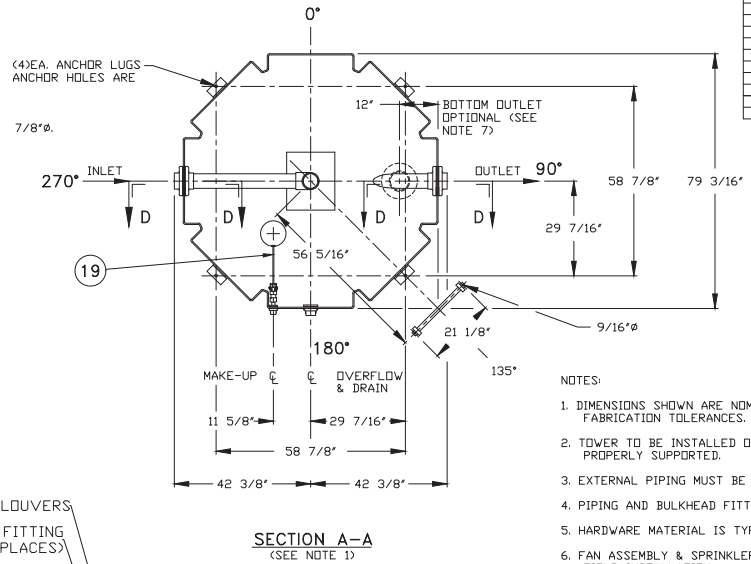
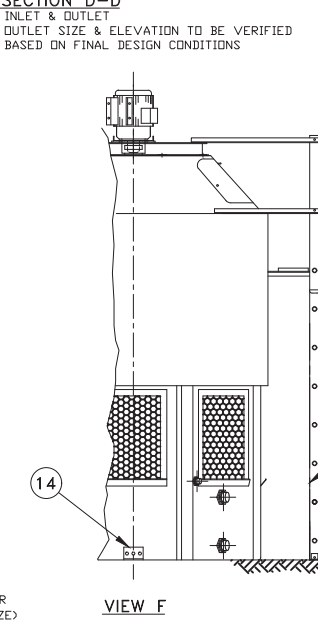
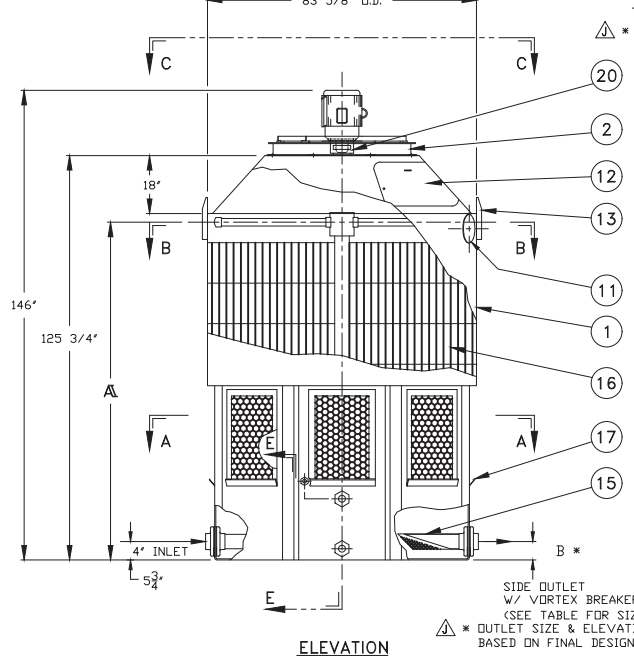
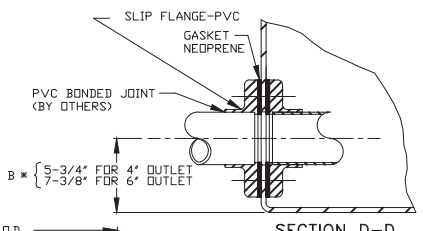
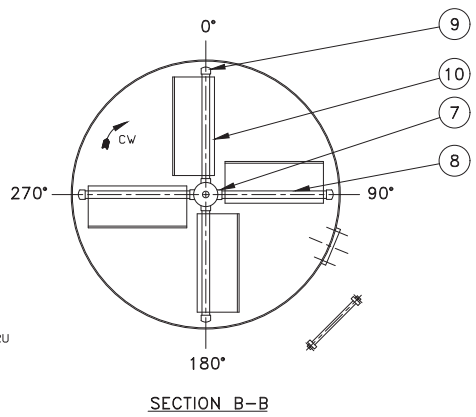
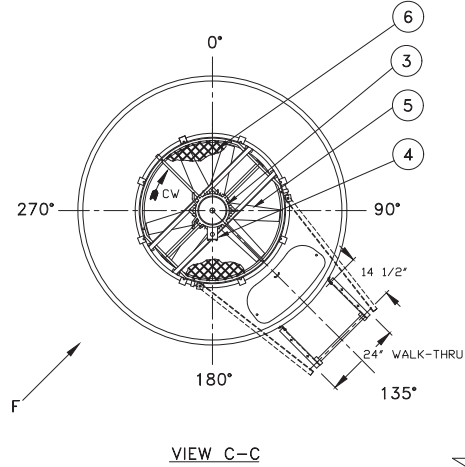


DATE	SYM	REVISION	AUTH/CHK
4/7/06	A	REVISED SIDE OUT, B DIMENSIONS	KF JBH
5/4/07	B	REVISED A DIMENSION	KF JBH
10/25/07	C	REVISED ELIMINATOR BLADES	KF JBH
3/22/08	D	REVISED "X" DIMENSION	KF JBH
11/14/08	E	REVISED MAMWAY SIZE	KF JBH
6/1/10	F	REVISED MAKE-UP	KF JBH
5/10/10	G	REVISED MAKE-UP MATERIAL	KF JBH
6/3/11	H	OPTIONAL H2O HAMMER ARRESTER	LM JBH
7/29/15	I	REV. MAKE-UP ASSEMBLY	MO JBH
1/28/18	J	ADDED OUTLET SIZING NOTE	SS JFP



- NOTES:
- DIMENSIONS SHOWN ARE NOMINAL AND ARE SUBJECT TO FABRICATION TOLERANCES.
 - TOWER TO BE INSTALLED ON A FLAT AND RIGID SURFACE, PROPERLY SUPPORTED.
 - EXTERNAL PIPING MUST BE INDEPENDENTLY SUPPORTED.
 - PIPING AND BULKHEAD FITTING MATERIAL IS PVC.
 - HARDWARE MATERIAL IS TYPE 304 STAINLESS STEEL.
 - FAN ASSEMBLY & SPRINKLER ARMS SHIPPED SEPARATELY FOR FIELD INSTALLATION.
 - FOR BOTTOM OUTLET MAXIMUM OPENING IN SUPPORT TO BE 14" X 14".
 - MAXIMUM INLET WATER TEMPERATURE 140°F. (CONSULT FACTORY FOR HIGHER TEMP. APPLICATIONS.)
 - SEE DVG. NO DT-D-80-755 FOR MULTICELL LAYOUT.
 - ALL DIMENSIONS ARE IN INCHES.
 - ALL WEIGHTS ARE IN POUNDS, DRY WT. INCLUDES FAN ASSEMBLY, SINGLE SPEED MOTOR & TOWER COMPLETE. MAX. FAN WT. INCLUDES FAN ASSEMBLY AND TWO SPEED MOTOR.
 - RISER PIPE HAS 1/4" WEEP HOLE IN SUMP.
 - OPTIONAL H2O HAMMER ARRESTER MAY RELIEVE POTENTIAL WATER HAMMER DUE TO HIGH SUPPLY PRESSURE.

ITEM	QTY	PART NO.	DESCRIPTION	MATERIAL	REMARKS
21	1		H2O HAMMER ARREST	COPPER	OPTIONAL
20	1		VIBRATION SWITCH	STEEL	OPTIONAL
19	1		FLGAT VALVE	POLYPROPYLENE	
18	1		LADDER ASSEMBLY	ALUMINUM	OPTIONAL
17	1 SET		LOUVER	PVC	
16	1 SET		FILL	PVC	
15	1		STRAINER	PLASTIC	OPTIONAL
14	4		ANCHOR LUG	ALUMINUM	
13	2		LIFTING LUG	ALUMINUM	
12	1		MANHOLE COVER	POLYETHYLENE	
11	1		CLEAN-OUT PORT	POLYETHYLENE	
10	4		MIST ELIMINATOR	POLYETHYLENE	
9	4		PIPE CAP	PVC	
8	4		SPRINKLER PIPE	PVC	
7	1		SPRINKLER HEAD	PVC	
6	1		FAN GUARD	COATED STEEL	
5	1		PROPELLER	POLYPRDP/FRP	
4	1		ELECTRICAL BOX	ALUMINUM	
3	1		MOTOR	ALUM./STL.	
2	1		FAN RING	COATED STEEL	
1	1		TOWER SHELL	POLYETHYLENE	

BILL OF MATERIALS			
TOWER	T-55 I	T-70 I	T-85 I
FILL LAYERS	2 1/2	3 1/2	2 1/2
HP	2	3	5
DRY WT.	1180	1250	1270
OPER. WT.	3980	4050	4070
MAX. FAN WT.	255	255	273
	91 5/8"	101"	91 5/8"
BOTTOM OUT	4"	4"	6"
SIDE OUT	BASED ON FINAL DESIGN CONDITIONS		
	*	*	*



DELTA COOLING TOWERS, INC.
 185 US HIGHWAY 206 ROXBURY TOWNSHIP NJ 07836
 PH 973.586.2201 FAX 973.586.2243

TITLE **Paragon ΔT-55 I, ΔT-70 I, ΔT-85 I**

DWN BY *Susan Taylor*
 APPVD BY *John Flaherty*
 JOB#
 SCALE 5/8"=1'-0"
 DATE 7/06/05 DWG NO. **DT-D-81-756** REV. **J**

INFORMATION CONTAINED HEREIN IS SUBJECT TO CHANGE WITHOUT NOTICE IN THE INTEREST OF PRODUCT IMPROVEMENT.

OUTLET SIZE TO BE VERIFIED BASED ON FINAL DESIGN CONDITIONS.

* OUTLET SIZE & ELEVATION TO BE VERIFIED BASED ON FINAL DESIGN CONDITIONS