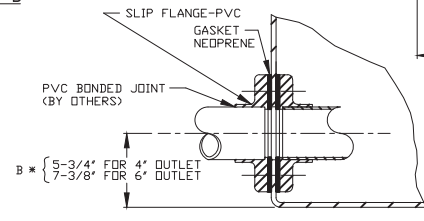
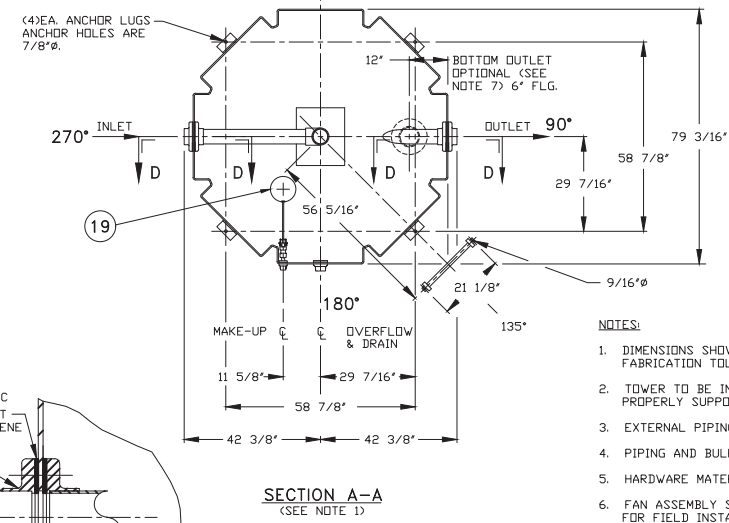
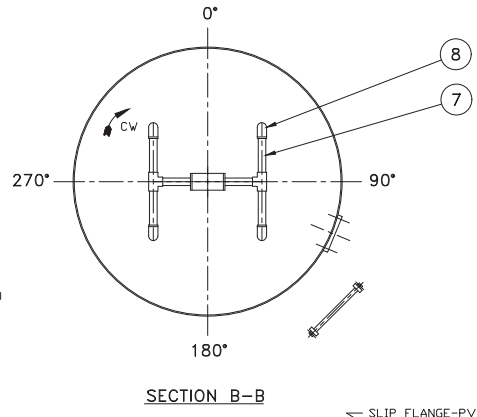
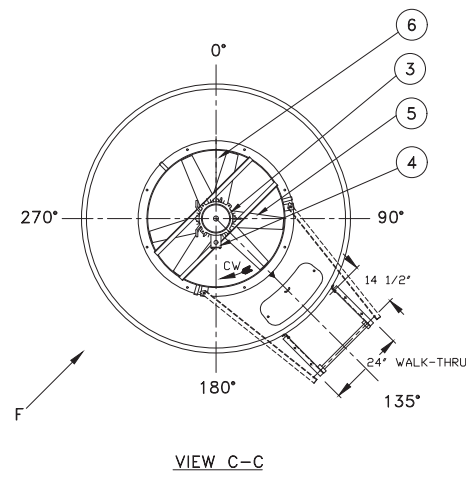
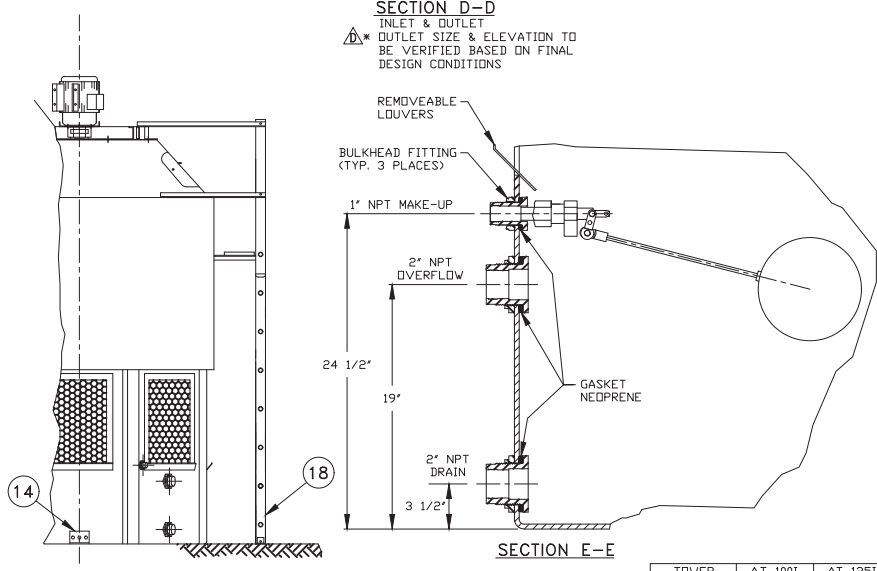
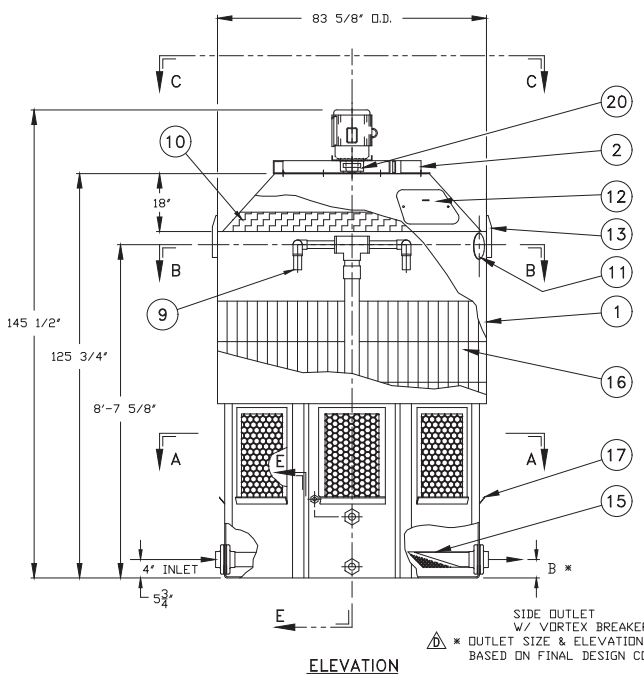


| DATE | STM | REVISION | AUTHOR |
|---------|-----|--------------------------|---------|
| 2/11/08 | - | INITIAL ISSUE | KF LJBH |
| 6/2/10 | A | REVISED MAKE-UP STYLE | KF LJBH |
| 6/10/10 | B | REVISED MAKE-UP MATERIAL | KF LJBH |
| 7/30/10 | C | REVISED MAKE-UP ASSEMBLY | MJ LJBH |
| 2/9/18 | B | ADDED OUTLET SIZING NOTE | SSJFP |



- NOTES:**
- DIMENSIONS SHOWN ARE NOMINAL AND ARE SUBJECT TO FABRICATION TOLERANCES.
 - TOWER TO BE INSTALLED ON A FLAT AND RIGID SURFACE, PROPERLY SUPPORTED.
 - EXTERNAL PIPING MUST BE INDEPENDENTLY SUPPORTED.
 - PIPING AND BULKHEAD FITTING MATERIAL IS PVC.
 - HARDWARE MATERIAL IS TYPE 304 STAINLESS STEEL.
 - FAN ASSEMBLY SHIPPED SEPARATELY FROM THE TOWER FOR FIELD INSTALLATION.
 - FOR BOTTOM OUTLET MAXIMUM OPENING IN SUPPORT TO BE 14" x 14".
 - MAXIMUM INLET WATER TEMPERATURE 140°F. (CONSULT FACTORY FOR HIGHER TEMP. APPLICATIONS.)
 - SEE DWG NO. DT-D-81-755 FOR MULTICELL LAYOUT.
 - ALL DIMENSIONS ARE IN INCHES.
 - ALL WEIGHTS ARE IN POUNDS. DRY WT. INCLUDES; FAN ASSEMBLY, SINGLE SPEED MOTOR & TOWER COMPLETE. MAX. FAN WT. INCLUDES FAN ASSEMBLY AND TWO SPEED MOTOR.
 - RISER PIPE HAS 1/4" WEEP HOLE IN SUMP.



| ITEM | QTY | PART NO. | DESCRIPTION | MATERIAL | REMARKS |
|------|-------|----------|------------------|---------------|----------|
| 20 | 1 | | VIBRATION SWITCH | STEEL | OPTIONAL |
| 19 | 1 | | FLGAT VALVE | POLYPROPYLENE | |
| 18 | 1 | | LADDER ASSEMBLY | ALUMINUM | OPTIONAL |
| 17 | 1 SET | | LOUVER | PVC | |
| 16 | 2 1/2 | | FILL | PVC | |
| 15 | 1 | | STRAINER | PLASTIC | OPTIONAL |
| 14 | 4 | | ANCHOR LUG | ALUMINUM | |
| 13 | 2 | | LIFTING LUG | ALUMINUM | |
| 12 | 1 | | MANHOLE COVER | POLYETHYLENE | |
| 11 | 1 | | CLEAN-OUT PORT | POLYETHYLENE | |
| 10 | 1 | | MIST ELIMINATOR | POLYETHYLENE | |
| 9 | 4 | | NOZZLES | PVC | |
| 8 | 4 | | 90° ELBOWS | PVC | |
| 7 | 1 | | PIPING ASSEMBLY | PVC | |
| 6 | 1 | | FAN GUARD | COATED STEEL | |
| 5 | 1 | | PROPELLER | POLYPROP/FRP | |
| 4 | 1 | | ELECTRICAL BOX | ALUM./STL. | |
| 3 | 1 | | MOTOR | ALUM./STL. | |
| 2 | 1 | | FAN RING | COATED STEEL | |
| 1 | 1 | | TOWER SHELL | POLYETHYLENE | |

| TOWER | HP | ΔT 1001 | ΔT 1251 |
|--------------|------|---------|---------|
| | 5 | 7 1/2 | |
| DRY WT. | 1330 | 1410 | |
| OPER. WT. | 4185 | 4260 | |
| DESIGN WT. | 6000 | 6075 | |
| MAX. FAN WT. | 273 | 292 | |



DELTA COOLING TOWERS, INC.
 185 US HIGHWAY 206 ROXBURY TOWNSHIP NJ 07836
 PH 973.586.2201 FAX 973.586.2243

TITLE **ΔT 1001 AND ΔT 1251 w/ FIXED SPRAY HEADER**
 DWN BY Kevin Fitzpatrick
 APPVD BY Joe Romagnolo
 SCALE 5/8"=1'-0"
 DATE 2/11/08 DWG NO. **D1-D-81-901** REV. **D**

INFORMATION CONTAINED HEREIN IS SUBJECT TO CHANGE WITHOUT NOTICE IN THE INTEREST OF PRODUCT IMPROVEMENT.

OUTLET SIZE TO BE VERIFIED BASED ON FINAL DESIGN CONDITIONS

△ * OUTLET SIZE & ELEVATION TO BE VERIFIED BASED ON FINAL DESIGN CONDITIONS