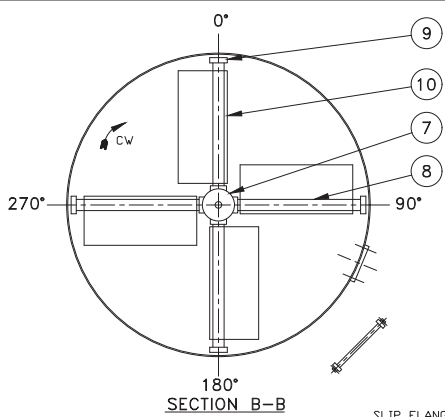
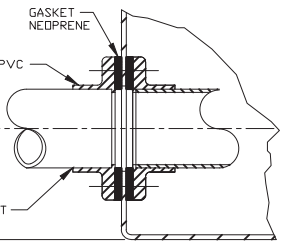


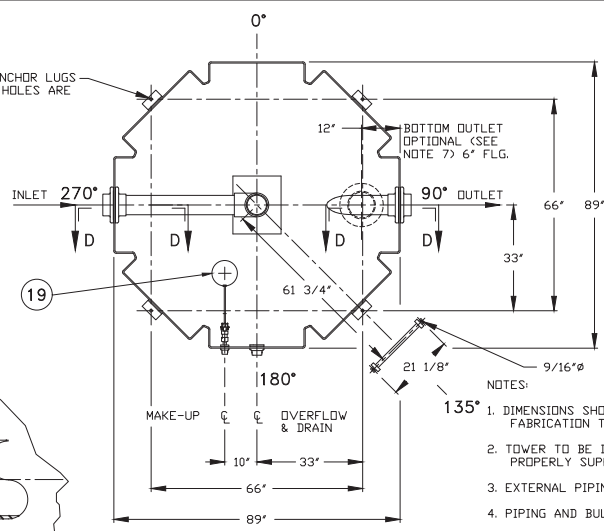
VIEW C-C



SECTION B-B

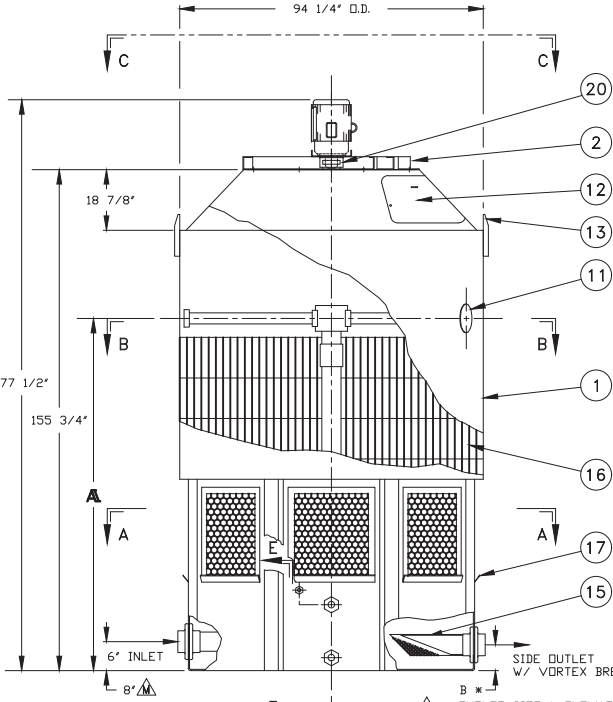


SECTION D-D

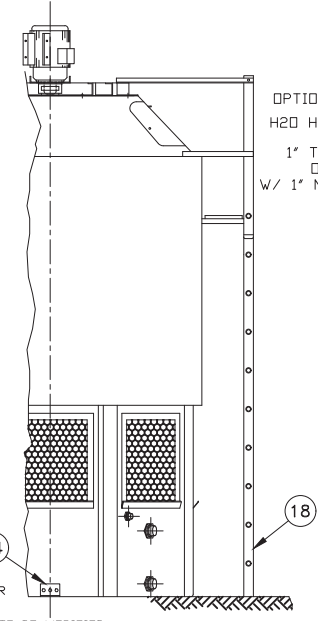


SECTION A-A
(SEE NOTE 1)

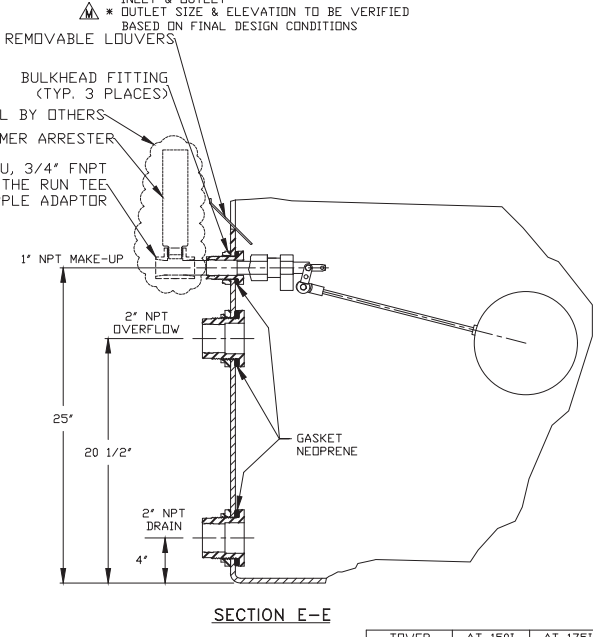
- NOTES:
1. DIMENSIONS SHOWN ARE NOMINAL AND ARE SUBJECT TO FABRICATION TOLERANCES.
 2. TOWER TO BE INSTALLED ON A FLAT AND RIGID SURFACE, PROPERLY SUPPORTED.
 3. EXTERNAL PIPING MUST BE INDEPENDENTLY SUPPORTED.
 4. PIPING AND BULKHEAD FITTING MATERIAL IS PVC.
 5. HARDWARE MATERIAL IS TYPE 304 STAINLESS STEEL.
 6. FAN ASSEMBLY & SPRINKLER ARMS SHIPPED SEPARATELY FOR FIELD INSTALLATION.
 7. FOR BOTTOM OUTLET MAXIMUM OPENING IN SUPPORT TO BE 14" X 14".
 8. MAXIMUM INLET WATER TEMPERATURE 140°F. (CONSULT FACTORY FOR HIGHER TEMP. APPLICATIONS.)
 9. SEE DWG. NO. DT-D-83-755 FOR MULTICELL LAYOUT.
 10. ALL DIMENSIONS ARE IN INCHES.
 11. ALL WEIGHTS ARE IN POUNDS, DRY WT. INCLUDES FAN ASSEMBLY, SINGLE SPEED MOTOR & TOWER COMPLETE. MAX. FAN WT. INCLUDES FAN ASSEMBLY AND TWO SPEED MOTOR.
 12. RISER PIPE HAS 1/4" WEEP HOLE IN SUMP.
 13. OPTIONAL H2O HAMMER ARRESTER MAY RELIEVE POTENTIAL WATER HAMMER DUE TO HIGH SUPPLY PRESSURE.



ELEVATION



VIEW F



SECTION E-E

INFORMATION CONTAINED HEREIN IS SUBJECT TO CHANGE WITHOUT NOTICE IN THE INTEREST OF PRODUCT IMPROVEMENT.

OUTLET SIZE TO BE VERIFIED BASED ON FINAL DESIGN CONDITIONS.

TOWER	ΔT 1501	ΔT 1751
HP	7 1/2"	10
DRY WT.	1660	1800
OPER. WT.	5570	5810
DESIGN WT.	8325	8570
MAX. FAN WT.	322	485
	109 1/2"	122 1/2"

ITEM	QTY	PART NO.	DESCRIPTION	MATERIAL	REMARKS
21	1		H2O HAMMER ARREST.	COPPER	OPTIONAL
20	1		VIBRATION SWITCH	STEEL	OPTIONAL
19	1		FLGAT VALVE	POLYPROPYLENE	
18	1		LADDER ASSEMBLY	ALUMINUM	OPTIONAL
17	1 SET		LOUVER	PVC	
16	1 SET		FILL	PVC	
15	1		STRAINER	PLASTIC	OPTIONAL
14	4		ANCHOR LUG	ALUMINUM	
13	2		LIFTING LUG	ALUMINUM	
12	1		MANHOLE COVER	POLYETHYLENE	
11	1		CLEAN-OUT PORT	POLYETHYLENE	
10	4		MIST ELIMINATOR	POLYETHYLENE	
9	4		PIPE CAP	PVC	
8	4		SPRINKLER PIPE	PVC	
7	1		SPRINKLER HEAD	PVC	
6	1		FAN GUARD	COATED STEEL	
5	1		PROPELLER	POLYPRDP/FRP	
4	1		ELECTRICAL BOX	ALUM.	
3	1		MOTOR	ALUM./STL.	
2	1		FAN RING	COATED STEEL	
1	1		TOWER SHELL	POLYETHYLENE	



DELTA COOLING TOWERS, INC.
 185 US HIGHWAY 206 ROXBURY TOWNSHIP NJ 07836
 PH 973.586.2201 FAX 973.586.2243

TITLE **ΔT 1501 AND ΔT 1751**

DWN BY *Alexander Clemente*
 APPVD BY *W.A. Patterson*
 JOB# _____ DWG NO. **DI-D-83-754** REV. **M**
 SCALE 5/8"=1'-0" DATE 9/20/96