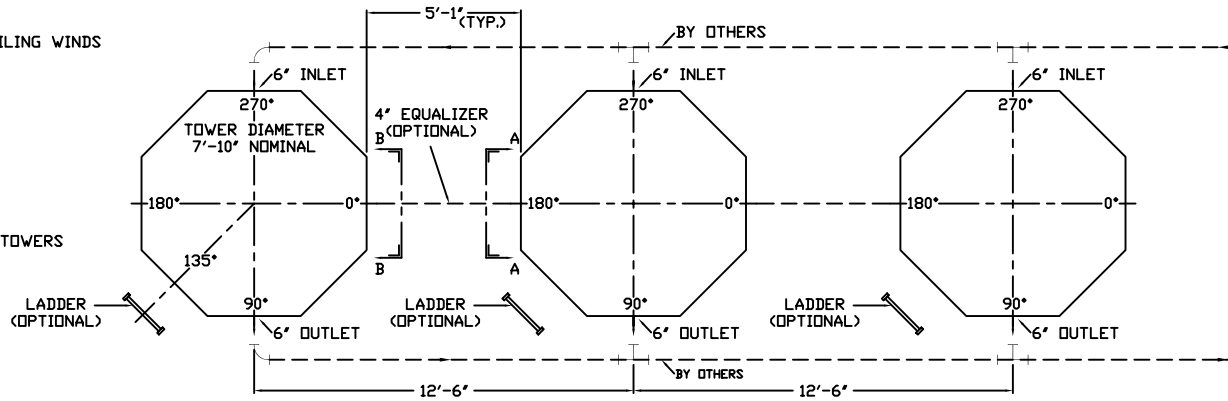
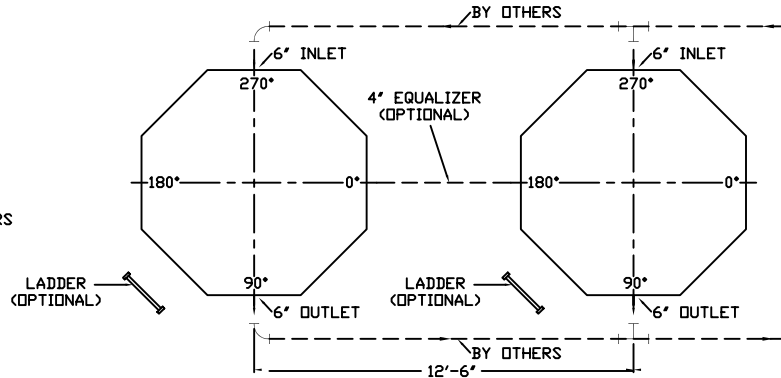


PREVAILING WINDS

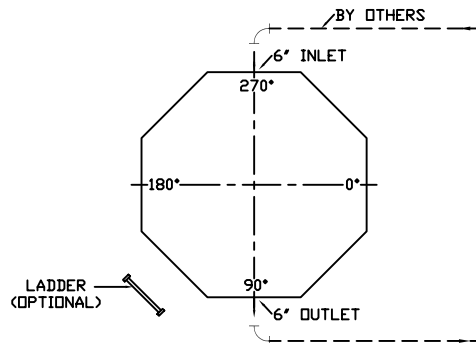
TYPICAL
3, 4, 5...TOWERS



TYPICAL
2 TOWERS

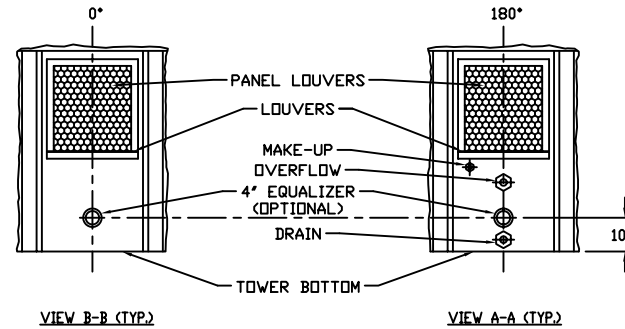


TYPICAL
1 TOWER



NOTES:

- SEE DRAWING #DT-D-80-754 FOR TOWER ASSEMBLY.
- FOR PROPER PERFORMANCE, TOWER(S) MUST BE INSTALLED IN AN UNOBSTRUCTED LOCATION FREE FROM CONDITIONS THAT MAY INDUCE RECIRCULATION OF DISCHARGE AIRFLOW OR RESTRICT THE SUPPLY OF AIRFLOW TO THE INLET OF THE TOWER(S).
- TOWER(S) MUST NOT BE INSTALLED NEAR ANY SOURCE OF HEAT, DISCHARGE OF STREAM, DISCHARGE OF HOT AND/OR HUMID EXHAUST AIR, ETC.
- MINIMUM RECOMMENDED DISTANCE FROM ANY SOLID WALL IS TWO THIRDS (2/3) OF THE TOWER DIAMETER, OR 5 FEET, WHICHEVER IS GREATER, IF ONLY ONE WALL IS INVOLVED. FOR INSTALLATION IN A CORNER BETWEEN TWO WALLS, THE DISTANCE SHOULD BE INCREASED TO A MINIMUM OF ONE (1) TOWER DIAMETER FROM EACH WALL.
- IF THE TOWER(S) ARE LOCATED NEAR A WALL OR ROOF LINE, THE FAN RING (POINT OF AIRFLOW DISCHARGE) SHOULD BE LEVEL OR HIGHER THAN THE WALL OR ROOF LINE.
- IF THE TOWER(S) ARE INSTALLED IN AN ENCLOSURE A MINIMUM 3 FOOT CLEARANCE IS ALLOWED, IF:
 - AIR INTAKE OPENINGS ARE PROVIDED IN AT LEAST THREE SIDES OF THE ENCLOSURE.
 - TOTAL NET FREE AREA IN WALLS IS AT LEAST EQUAL TO THE TOWER(S) CROSS SECTIONAL AREA.
 - TOP OF WALLS IS NOT HIGHER THAN THE TOWER(S) FAN RING.
- DIRECTION OF PREVAILING SUMMER WINDS SHOULD BE CONSIDERED IN TOWER LAYOUT. THE LEEWARD SIDE OF BUILDINGS IS GENERALLY NOT A DESIRABLE LOCATION FOR THE TOWER(S) INSTALLATION.
- IF ANY OF THE ABOVE LIMITATIONS ARE NOT SATISFIED, RELOCATING OR ELEVATING THE TOWER(S) SHOULD BE CONSIDERED. OFTEN THE MOST FEASIBLE COURSE OF ACTION IS EITHER AN ACCEPTANCE BY USER OF LOWER COOLING TOWER SYSTEM PERFORMANCE DUE TO ADVERSE LOCATION EFFECTS, OR INCREASING THE COOLING SYSTEM CAPACITY (LARGER TOWER(S) OR ADDITIONAL TOWER).
- FOR INSTALLATION, REFER TO DELTA COOLING TOWERS INDUCED DRAFT INSTALLATION, OPERATING AND MAINTENANCE INSTRUCTIONS.
- ALL FITTINGS ARE PVC SOCKET WELD FITTINGS.
- EXTERNAL PIPING, BY OTHERS, MUST BE INDEPENDENTLY SUPPORTED.
- TOWER(S) TO BE INSTALLED ON A FLAT AND RIGID SURFACE, PROPERLY SUPPORTED.



INFORMATION CONTAINED HEREIN IS SUBJECT TO CHANGE WITHOUT NOTICE IN THE INTEREST OF PRODUCT IMPROVEMENT.

 PARAGON®	DELTA COOLING TOWERS, INC.	
	41 PINE STREET, ROCKAWAY, NJ 07866	
	PH 973.586.2201	FAX 973.586.2243
	TITLE ΔT 150I AND ΔT 175I SINGLE AND MULTICELL LAYOUT	
	DWN BY Alexander Chernick APPRD BY W. J. Pollock	
JOB#	SCALE NONE	DWG NO.
DATE	9/20/96	DT-D-83-755