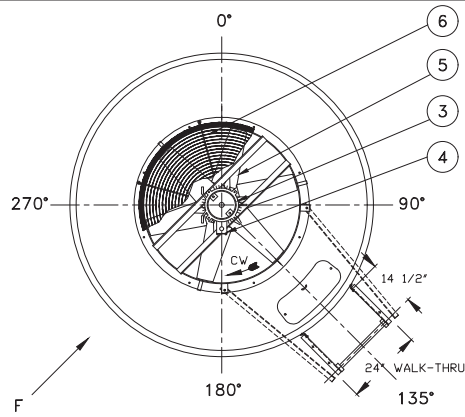
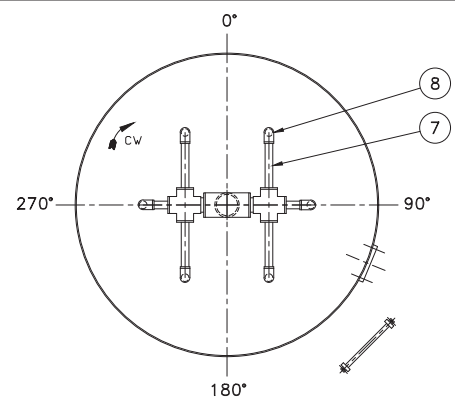


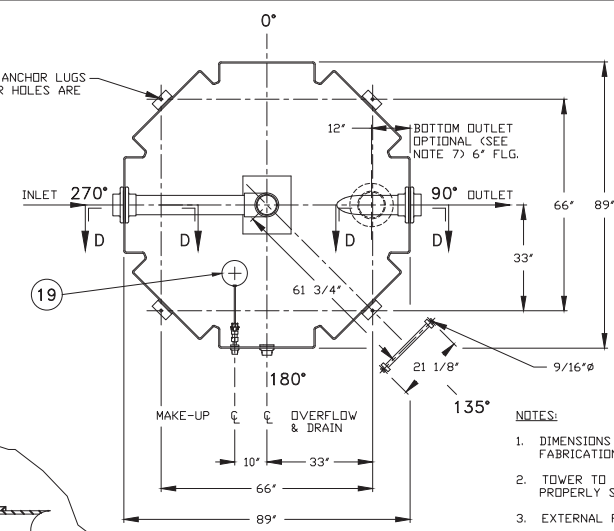
DATE	SYN	REVISION	AUTHOR
2/11/08	-	INITIAL ISSUE	KF/UBH
6/2/10	A	REVISED MAKE-UP STYLE	KF/UBH
16/10/10	B	REVISED MAKE-UP MATERIAL	KF/UBH
12/16/10	C	REVISED OUTLET HEIGHT	KF/UBH
5/31/11	D	REVISED OUTLET HEIGHT	LM/UBH
7/30/15	E	REVISED MAKE-UP ASSEMBLY	MO/UBH
2/9/18	F	ADDED OUTLET SIZING NOTE	SSJ/FP



VIEW C-C

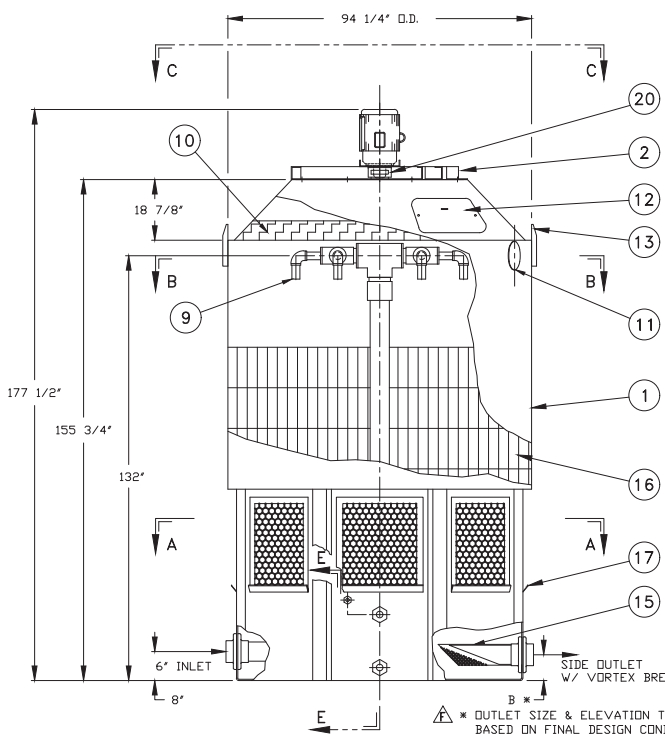


SECTION B-B

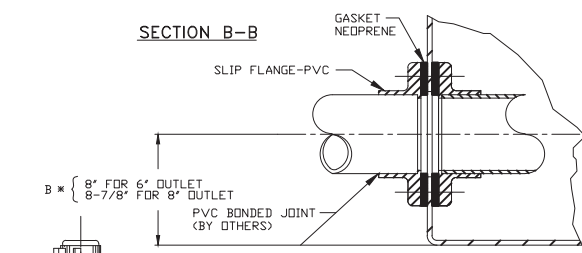


SECTION A-A
(SEE NOTE 1)

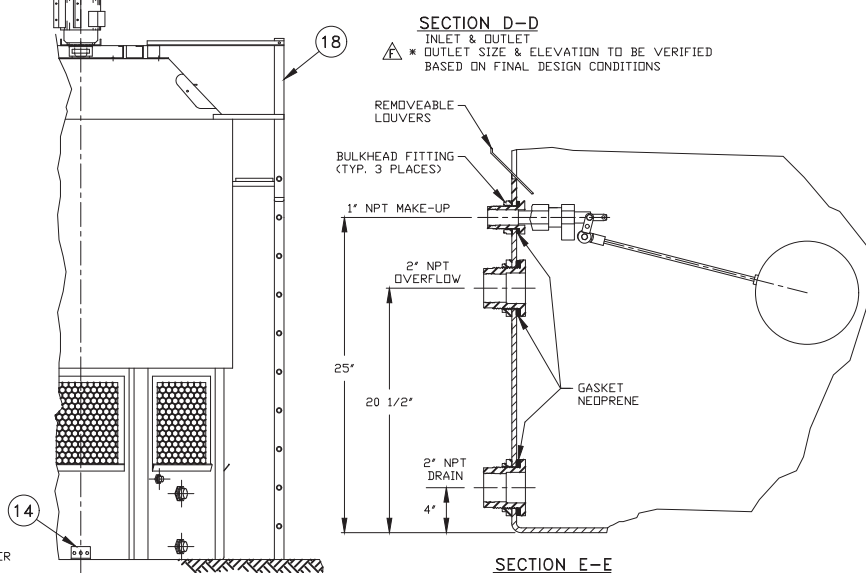
- NOTES:
- DIMENSIONS SHOWN ARE NOMINAL AND ARE SUBJECT TO FABRICATION TOLERANCES.
 - TOWER TO BE INSTALLED ON A FLAT AND RIGID SURFACE, PROPERLY SUPPORTED.
 - EXTERNAL PIPING MUST BE INDEPENDENTLY SUPPORTED.
 - PIPING AND BULKHEAD FITTING MATERIAL IS PVC.
 - HARDWARE MATERIAL IS TYPE 304 STAINLESS STEEL.
 - FAN ASSEMBLY SHIPPED SEPARATELY FROM THE TOWER FOR FIELD INSTALLATION.
 - FOR BOTTOM OUTLET MAXIMUM OPENING IN SUPPORT TO BE 14" x 14".
 - MAXIMUM INLET WATER TEMPERATURE 140°F. (CONSULT FACTORY FOR HIGHER TEMP. APPLICATIONS.)
 - SEE DWG. NO. DT-D-83-755 FOR MULTICELL LAYOUT.
 - ALL DIMENSIONS ARE IN INCHES.
 - ALL WEIGHTS ARE IN POUNDS. DRY WT. INCLUDES; FAN ASSEMBLY, SINGLE SPEED MOTOR & TOWER COMPLETE. MAX. FAN WT. INCLUDES FAN ASSEMBLY AND TWO SPEED MOTOR.
 - RISER PIPE HAS 1/4" WEEP HOLE IN SUMP.



ELEVATION



SECTION D-D
INLET & OUTLET
* OUTLET SIZE & ELEVATION TO BE VERIFIED BASED ON FINAL DESIGN CONDITIONS



SECTION E-E

VIEW F

ITEM	QTY	PART NO.	DESCRIPTION	MATERIAL	REMARKS
20	1		VIBRATION SWITCH	STEEL	OPTIONAL
19	1		FLGAT VALVE	POLYPROPYLENE	
18	1		LADDER ASSEMBLY	ALUMINUM	OPTIONAL
17	1 SET		LOUVER	PVC	
16	3 1/2		FILL	PVC	
15	1		STRAINER	PLASTIC	OPTIONAL
14	4		ANCHOR LUG	ALUMINUM	
13	2		LIFTING LUG	ALUMINUM	
12	1		MANHOLE COVER	POLYETHYLENE	
11	1		CLEAN-OUT PORT	POLYETHYLENE	
10	1		MIST ELIMINATOR	POLYETHYLENE	
9	6		NOZZLES	PVC	
8	6		90° ELBOWS	PVC	
7	1		PIPING ASSEMBLY	PVC	
6	1		FAN GUARD	COATED STEEL	
5	1		PROPELLER	POLYPROP/FRP	
4	1		ELECTRICAL BOX	ALUM.	
3	1		MOTOR	ALUM./STL.	
2	1		FAN RING	COATED STEEL	
1	1		TOWER SHELL	POLYETHYLENE	

DELTA COOLING TOWERS, INC.
 185 US HIGHWAY 206 ROXBURY TOWNSHIP NJ 07836
 PH 973.586.2201 FAX 973.586.2243

TITLE: **ΔT 1501 AND ΔT 1751 w/ FIXED SPRAY HEADER**
 DWN BY Kevin Fitzpatrick
 APPVD BY Joe Rompa

JOB# SCALE 5/8"=1'-0" DWG NO. DT-D-83-901 REV. F
 DATE 2/11/08

TOWER	ΔT 1501	ΔT 1751
HP	7 1/2"	10
DRY WT.	1660	1800
OPER. WT.	5570	5810
DESIGN WT.	8325	8570
MAX. FAN WT.	322	485

INFORMATION CONTAINED HEREIN IS SUBJECT TO CHANGE WITHOUT NOTICE IN THE INTEREST OF PRODUCT IMPROVEMENT.

OUTLET SIZE TO BE VERIFIED BASED ON FINAL DESIGN CONDITIONS.