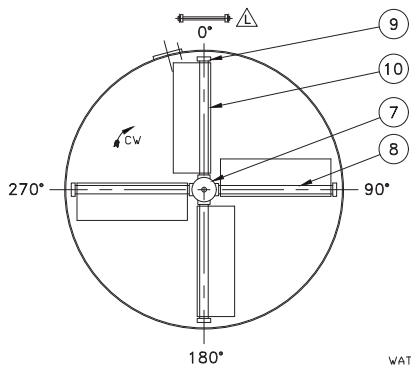
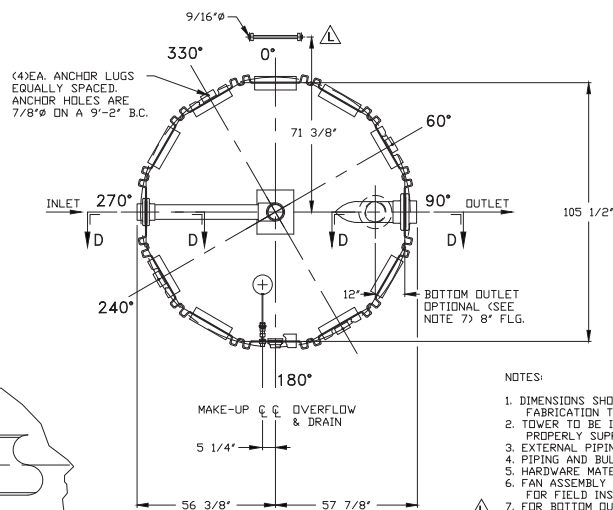


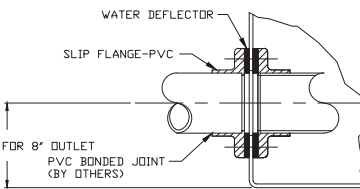
VIEW C-C



SECTION B-B



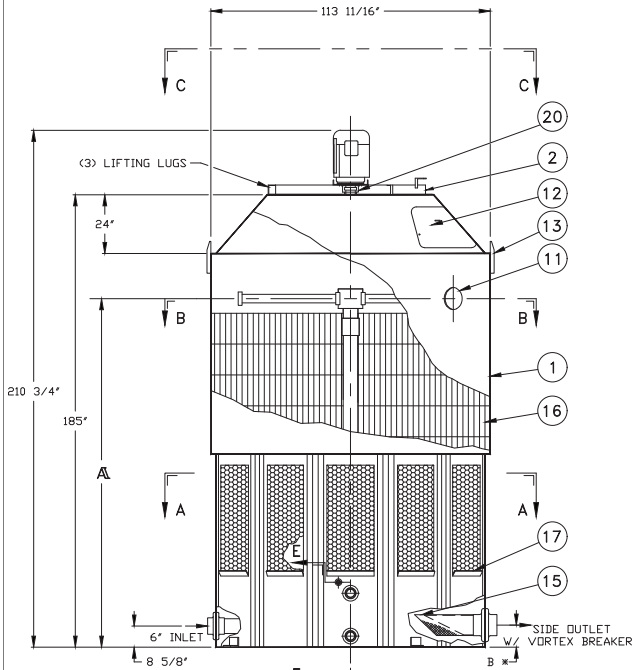
SECTION A-A  
(SEE NOTE 1)



SECTION D-D  
INLET & OUTLET

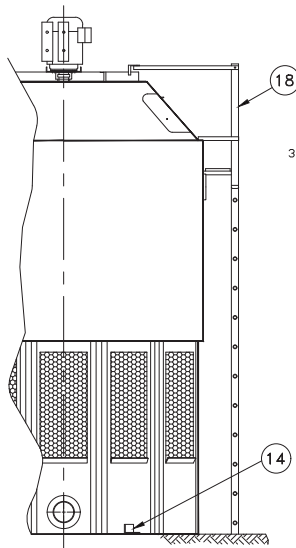
\* OUTLET SIZE & ELEVATION TO BE VERIFIED BASED ON FINAL DESIGN CONSIDERATIONS

- NOTES:
- DIMENSIONS SHOWN ARE NOMINAL AND ARE SUBJECT TO FABRICATION TOLERANCES.
  - TOWER TO BE INSTALLED ON A FLAT AND RIGID SURFACE, PROPERLY SUPPORTED.
  - EXTERNAL PIPING MUST BE INDEPENDENTLY SUPPORTED.
  - PIPING AND BULKHEAD FITTING MATERIAL IS PVC.
  - HARDWARE MATERIAL IS TYPE 304 STAINLESS STEEL.
  - FAN ASSEMBLY & SPRINKLER ARMS SHIPPED SEPARATELY FOR FIELD INSTALLATION.
  - FOR BOTTOM OUTLET MAXIMUM OPENING IN SUPPORT TO BE 14" X 14". CONSULT DELTA ENGINEERING FOR LARGER OPENINGS.)
  - MAXIMUM INLET WATER TEMPERATURE 140°F. (CONSULT FACTORY FOR HIGHER TEMP. APPLICATIONS.)
  - ALL DIMENSIONS ARE IN INCHES.
  - ALL WEIGHTS ARE IN POUNDS, DRY WT. INCLUDES; FAN ASSEMBLY, SINGLE SPEED MOTOR & TOWER COMPLETE. MAX. FAN WT. INCLUDES FAN ASSEMBLY AND TWO SPEED MOTOR.
  - RISER PIPE HAS 1/4" WEEP HOLE IN SUMP.
  - OPTIONAL H2O HAMMER ARRESTER MAY RELIEVE POTENTIAL WATER HAMMER DUE TO HIGH SUPPLY PRESSURE.
  - SEE DWG. NO DT-D-80-755 FOR MULTICELL LAYOUT.

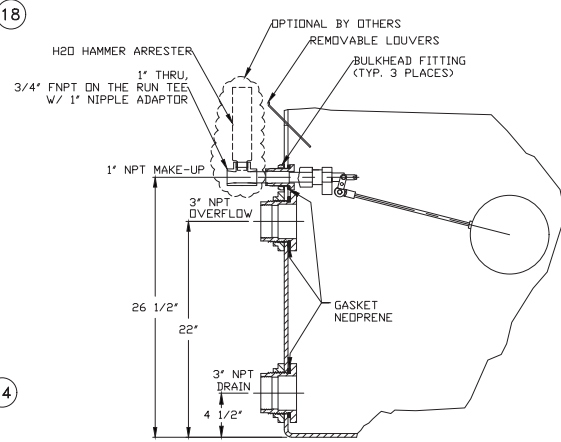


ELEVATION

\* OUTLET SIZE & ELEVATION TO BE VERIFIED BASE ON FINAL DESIGN CONDITIONS



VIEW F



SECTION E-E

• 200I TO 250I OUTLET SIZING			
OUTLET SIZE	STANDARD 8"	OVERSIZED 10"	MUST BE PUMPED
SIDE OUTLET	570 GPM	-	>570 GPM
BOTTOM OUTLET	1200 GPM	1850 GPM	>1850 GPM

ITEM	QTY	PART NO.	DESCRIPTION	MATERIAL	REMARKS
21	1		H2O HAMMER ARRESTER	COPPER	OPTIONAL
20	1		VIBRATION SWITCH	STEEL	OPTIONAL
19	1		FLOAT VALVE	POLYPROPYLENE	
18	1		LADDER ASSEMBLY	ALUMINUM	OPTIONAL
17	1 SET		LOUVER PANEL	PVC	
16	1 SET		FILL	PVC	
15	1		STRAINER	PLASTIC	OPTIONAL
14	4		ANCHOR LUG	ALUMINUM	
13	2		LIFTING LUG	ALUMINUM	
12	1		MANHOLE COVER	POLYETHYLENE	
11	1		CLEAN-OUT PORT	POLYETHYLENE	
10	4		MIST ELIMINATOR	POLYETHYLENE	
9	4		PIPE CAP	PVC	
8	4		SPRINKLER PIPE	PVC	
7	1		SPRINKLER HEAD	PVC	
6	1		FAN GUARD	COATED STEEL	SPLIT
5	1		PROPELLER	POLYPROP/FRP	
4	1		ELECTRICAL CONN.	STEEL	
3	1		MOTOR	STEEL	TEAD, DIR. DRIVE
2	1		FAN RING	COATED STEEL	
1	1		TOWER SHELL	POLYETHYLENE	

**DELTA COOLING TOWERS, INC.**  
185 US HIGHWAY 206 ROXBURY TOWNSHIP NJ 07836  
PH 973.586.2201 FAX 973.586.2243



PARAGON®

TOWER	HP	ΔT 200I	ΔT 250I
DRY WT.	2670	2815	
OPER. WT.	8355	8500	
DESIGN WT.	10855	11000	
MAX. FAN WT.	570	610	
	129 1/2"	142 1/8"	

INFORMATION CONTAINED HEREIN IS SUBJECT TO CHANGE WITHOUT NOTICE IN THE INTEREST OF PRODUCT IMPROVEMENT.

TITLE: ΔT 200I AND ΔT 250I  
PARAGON SERIES  
JOB #  
SCALE 1/2" = 1'-0"  
DATE 9/20/96

DWN BY Alexander Elomoro  
APPRD BY W. J. Pullerton  
DWG NO. DT-D-80-754  
REV. L

NOT TO BE USED FOR FABRICATION