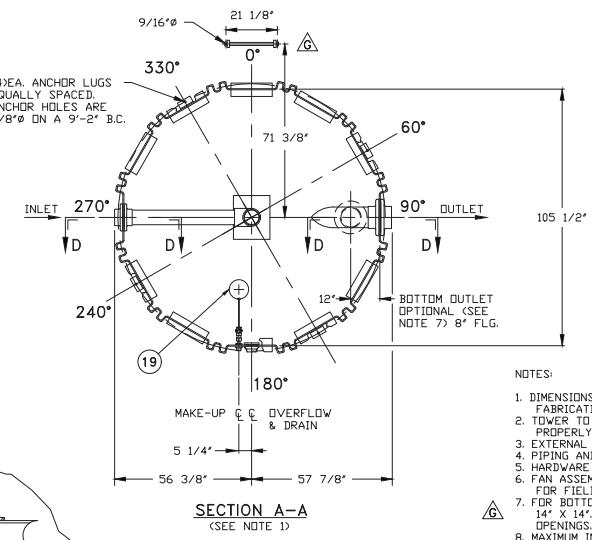
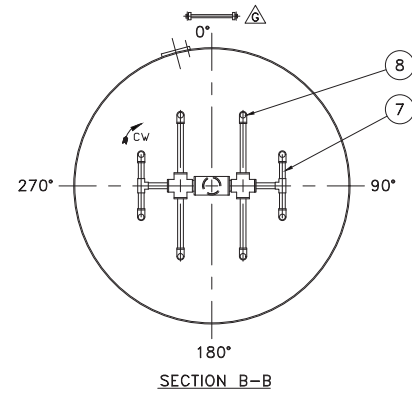
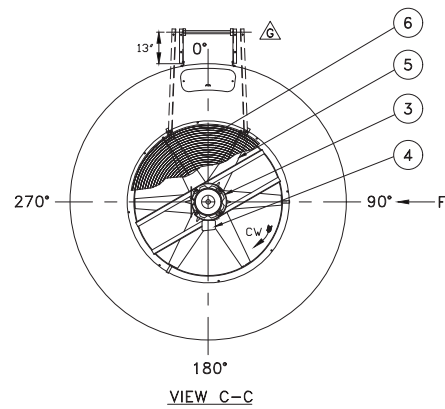
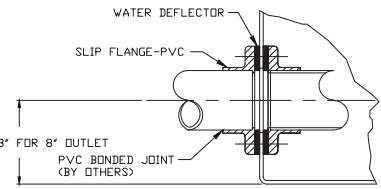


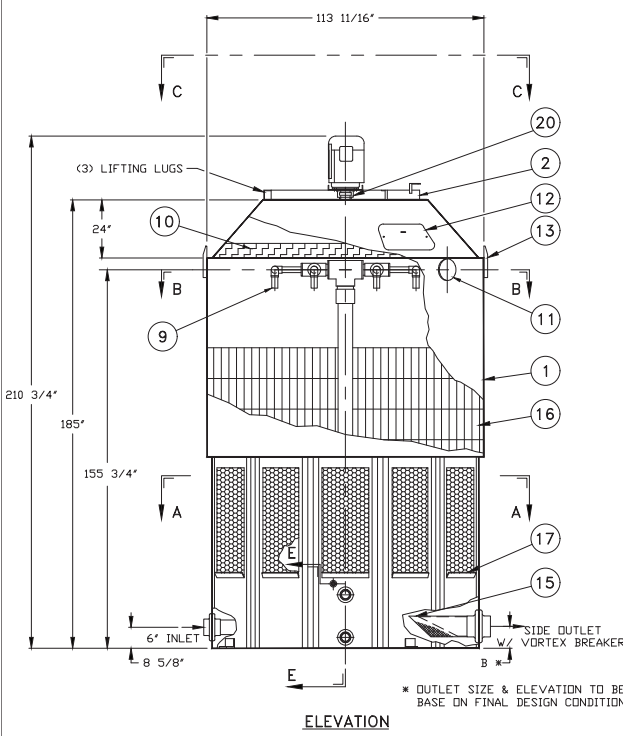
DATE	BY	REVISION	AUTH/CHK
2/21/08		INITIAL ISSUE	KF/UBH
6/2/10	A	REVISED MAKE-UP STYLE	KF/UBH
6/10/10	B	REVISED MAKE-UP MATERIAL	KF/UBH
7/30/15	C	REVISED MAKE-UP ASSEMBLY	MD/UBH
2/9/18	D	ADDED OUTLET SIZING NITE	SS/FP
4/24/19	E	REVISED VIEW F	RR/FP
4/1/24	F	ADDED OUTLET SIZING CHART	RR/FP
4/14/25	G	STANDARD LADDER ORIENTATION	RR/FP



- NOTES:
- DIMENSIONS SHOWN ARE NOMINAL AND ARE SUBJECT TO FABRICATION TOLERANCES.
 - TOWER TO BE INSTALLED ON A FLAT AND RIGID SURFACE, PROPERLY SUPPORTED.
 - EXTERNAL PIPING MUST BE INDEPENDENTLY SUPPORTED.
 - PIPING AND BULKHEAD FITTING MATERIAL IS PVC.
 - HARDWARE MATERIAL IS TYPE 304 STAINLESS STEEL.
 - FAN ASSEMBLY & SPRINKLER ARMS SHIPPED SEPARATELY FOR FIELD INSTALLATION.
 - FOR BOTTOM OUTLET MAXIMUM OPENING IN SUPPORT TO BE 14" X 14". (CONSULT DELTA ENGINEERING FOR LARGER OPENINGS.)
 - MAXIMUM INLET WATER TEMPERATURE 140°F. (CONSULT FACTORY FOR HIGHER TEMP. APPLICATIONS.)
 - ALL DIMENSIONS ARE IN INCHES.
 - ALL WEIGHTS ARE IN POUNDS. DRY WT. INCLUDES FAN ASSEMBLY, SINGLE SPEED MOTOR & TOWER COMPLETE. MAX. FAN WT. INCLUDES FAN ASSEMBLY AND TWO SPEED MOTOR.
 - RISER PIPE HAS 1/4" WEEP HOLE IN SUMP.
 - OPTIONAL H2O HAMMER ARRESTER MAY RELIEVE POTENTIAL WATER HAMMER DUE TO HIGH SUPPLY PRESSURE.
 - SEE DWG. NO. DT-D-80-755 FOR MULTICELL LAYOUT.

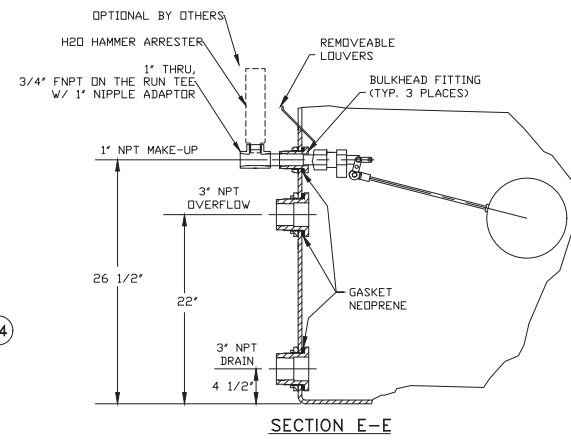


SECTION D-D
INLET & OUTLET
* OUTLET SIZE & ELEVATION TO BE VERIFIED BASED ON FINAL DESIGN CONSIDERATIONS



* OUTLET SIZE & ELEVATION TO BE VERIFIED BASE ON FINAL DESIGN CONDITIONS

VIEW F

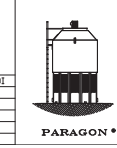


SECTION E-E

2001 TO 2501 OUTLET SIZING

OUTLET SIZE	STANDARD 8"	OVERSIZED 10" MUST BE PUMPED
SIDE OUTLET	570 GPM	>570 GPM
BOTTOM OUTLET	1200 GPM	1850 GPM >1850 GPM

NO	QTY	PART NO.	DESCRIPTION	MATERIAL	REMARKS
20	1		VIBRATION SWITCH	STEEL	OPTIONAL
19	1		FLD/AT VALVE	POLYPROPYLENE	
18	1		LADDER ASSEMBLY	ALUMINUM	OPTIONAL
17	1	SET	LOUVER PANEL	PVC	
16	3	1/2	FILL	PVC	
15	1		STRAINER	PLASTIC	OPTIONAL
14	4		ANCHOR LUG	ALUMINUM	
13	2		LIFTING LUG	ALUMINUM	
12	1		MANHOLE COVER	POLYETHYLENE	
11	1		CLEAN-OUT PORT	POLYETHYLENE	
10	1		MIST ELIMINATOR	POLYETHYLENE	
9	8		NOZZLES	PVC	
8	8		90° ELBOWS	PVC	
7	1		PIPING ASSEMBLY	PVC	
6	1		FAN GUARD	COATED STEEL	SPLIT
5	1		PROPELLER	POLYPROP/FRP	
4	1		ELECTRICAL CONDN.	STEEL	
3	1		MOTOR	STEEL	TEAD, DIR. DRIVE
2	1		FAN RING	COATED STEEL	
1	1		TOWER SHELL	POLYETHYLENE	



DELTA COOLING TOWERS, INC.
185 US HIGHWAY 206 ROXBURY TOWNSHIP NJ 07836
PH 973.586.2201 FAX 973.586.2243

TITLE: Δ T 2001 AND Δ T 2501 W/ FIXED SPRAY HEADER
PARAGON SERIES DWN BY Kevin Hylbrand
JOB# APPVD BY Sue Rompa

SCALE 1/2" = 1'-0" DWG NO. DT-D-80-901 G
DATE 2/11/08

TOWER	ΔT	2001	ΔT	2501
HP	10	15		
DRY WT.	2670	2815		
OPER. WT.	8355	8500		
DESIGN WT.	10655	10800		
MAX. FAN WT.	570	610		

INFORMATION CONTAINED HEREIN IS SUBJECT TO CHANGE WITHOUT NOTICE IN THE INTEREST OF PRODUCT IMPROVEMENT.

OUTLET SIZE TO BE VERIFIED BASED ON FINAL DESIGN CONDITIONS

NOT TO BE USED FOR FABRICATION