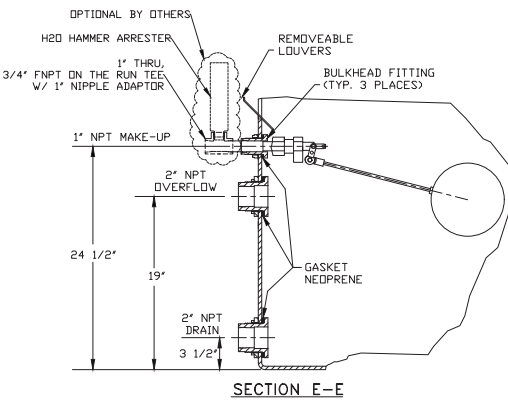


\* OUTLET SIZE & ELEVATION TO BE VERIFIED BASED ON FINAL DESIGN CONDITIONS



**\* 1001 TO 1251 OUTLET SIZING**

OUTLET SIZE	STANDARD 4"	OVERSIZED 6"	MUST BE PUMPED
SIDE OUTLET	150 GPM	325 GPM	>325 GPM
BOTTOM OUTLET	285 GPM	650 GPM	>650 GPM

TOWER	ΔT 1001	ΔT 1251
HP	5	7 1/2
DRY WT.	1330	1410
OPER. WT.	4185	4260
DESIGN WT.	6000	6075
MAX. FAN WT.	273	292
A	101 1/2"	101 1/2"

- NOTES:**
- DIMENSIONS SHOWN ARE NOMINAL AND ARE SUBJECT TO FABRICATION TOLERANCES.
  - TOWER TO BE INSTALLED ON A FLAT AND RIGID SURFACE, PROPERLY SUPPORTED.
  - EXTERNAL PIPING MUST BE INDEPENDENTLY SUPPORTED.
  - PIPING AND BULKHEAD FITTING MATERIAL IS PVC.
  - HARDWARE MATERIAL IS TYPE 304 STAINLESS STEEL.
  - FAN ASSEMBLY & SPRINKLER ARMS SHIPPED SEPARATELY FOR FIELD INSTALLATION.
  - FOR BOTTOM OUTLET MAXIMUM OPENING IN SUPPORT TO BE 14" X 14". (CONSULT DELTA ENGINEERING FOR LARGER OPENINGS.)
  - MAXIMUM INLET WATER TEMPERATURE 140°F. (CONSULT FACTORY FOR HIGHER TEMP. APPLICATIONS.)
  - ALL DIMENSIONS ARE IN INCHES.
  - ALL WEIGHTS ARE IN POUNDS. DRY WT. INCLUDES: FAN ASSEMBLY, SINGLE SPEED MOTOR & TOWER COMPLETE. MAX. FAN WT. INCLUDES FAN ASSEMBLY AND TWO SPEED MOTOR.
  - RISER PIPE HAS 1/4" WEEP HOLE IN SUMP.
  - SEE DWG. NO DT-D-80-755 FOR MULTICELL LAYOUT.
  - OPTIONAL H2O HAMMER ARRESTER MAY RELIEVE POTENTIAL WATER HAMMER DUE TO HIGH SUPPLY PRESSURE.

ITEM	QTY	PART NO.	DESCRIPTION	MATERIAL	REMARKS
21	1		H2O HAMMER ARREST.	COPPER	OPTIONAL
20	1		VIBRATION SWITCH	STEEL	OPTIONAL
19	1		FLDAT VALVE	POLYPROPYLENE	
18	1		LADDER ASSEMBLY	ALUMINUM	OPTIONAL
17	1	SET	LOUVER	PVC	
16	1	SET	FILL	PVC	
15	1		STRAINER	PLASTIC	OPTIONAL
14	4		ANCHOR LUG	ALUMINUM	
13	2		LIFTING LUG	ALUMINUM	
12	1		MANHOLE COVER	POLYETHYLENE	
11	1		CLEAN-OUT PORT	POLYETHYLENE	
10	4		MIST ELIMINATOR	POLYETHYLENE	
9	4		PIPE CAP	PVC	
8	4		SPRINKLER PIPE	PVC	
7	1		SPRINKLER HEAD	PVC	
6	1		FAN GUARD	COATED STEEL	
5	1		PROPELLER	POLYPROP/FRP	
4	1		ELECTRICAL BOX	ALUMINUM	
3	1		MOTOR	ALUM./STL	
2	1		FAN RING	COATED STEEL	
1	1		TOWER SHELL	POLYETHYLENE	

**DELTA COOLING TOWERS, INC.**  
185 US HIGHWAY 206 ROXBURY TOWNSHIP NJ 07836  
PH 973.586.2201 FAX 973.586.2243

**TITLE** ΔT 1001 AND ΔT 1251  
**PARAGON SERIES** DWN BY Alexander Elements  
**JOB #** APPVD BY W.A. Patterson  
**SCALE** 5/8"=1'-0" DWG NO. REV.  
**DATE** 9/20/96 **DT-D-81-754** O

NOT TO BE USED FOR FABRICATION

INFORMATION CONTAINED HEREIN IS SUBJECT TO CHANGE WITHOUT NOTICE IN THE INTEREST OF PRODUCT IMPROVEMENT.

OUTLET SIZE TO BE VERIFIED BASED ON FINAL DESIGN CONDITIONS.

DATE	BY	REVISION	AUTH/CHK
9/20/96	A	DRAWN IN ACAD	KAC/WP
7/23/98	B	REV. FAN RING & DIM.	BD/WP
10/11/99	C	REV. SECT. E-E DIM	BD
12/12/00	D	ADDED NOTE 12	BD/JF
9/26/01	E	REV. SHELL HT. FROM 137 3/4"	BD/JF
5/23/02	F	REV. FAN ASSEMBLY	BD/JF
5/24/07	G	REVISED A DIMENSION	KF/UB
10/25/07	H	REVISED ELIMINATOR BLADES	KF/UB
11/14/08	I	REVISED MANWAY SIZE	KF/UB
6/1/10	J	REVISED MAKE-UP	KF/UB
6/10/10	K	REVISED MAKE-UP MATERIAL	KF/UB
6/3/11	L	OPT H2O HAMMER ARRESTER	LM/UB
7/29/15	M	REV. MAKE-UP ASSEMBLY	MJ/UB
12/8/18	N	ADDED OUTLET SIZING NOTE	SS/FP
3/31/25	O	0" STANDARD LADDER ORIENTATION	SR/FP