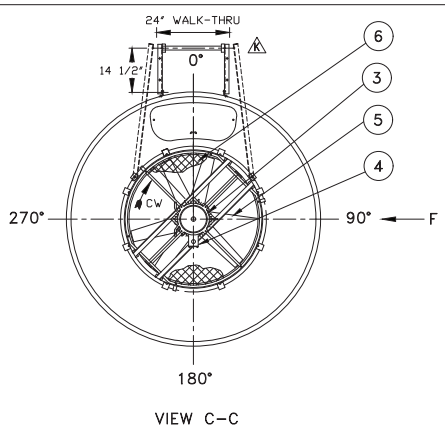
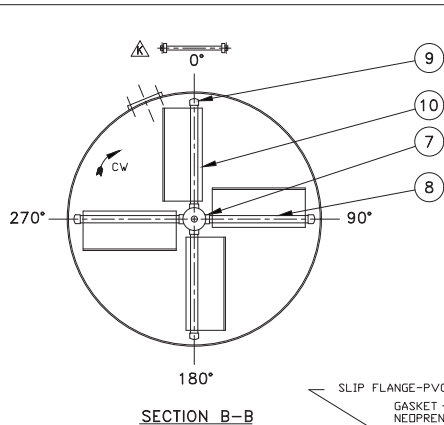


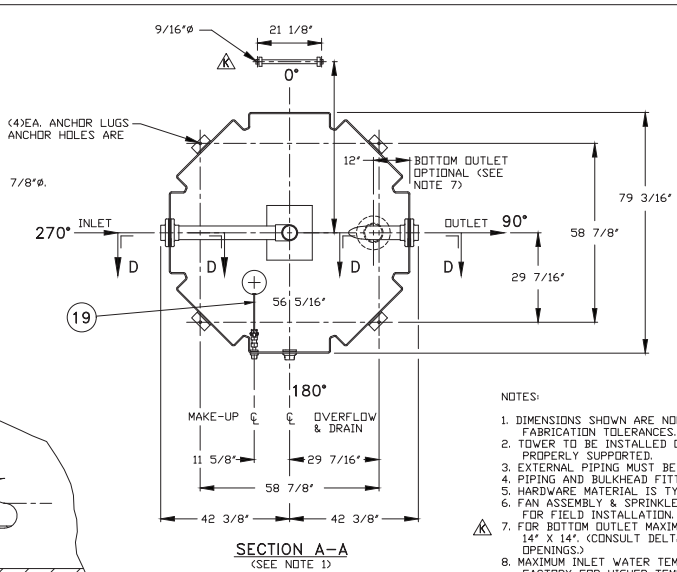
DATE	SYM	REVISION	AUTH	CHK
4/7/06	A	REVISED SIDE OUT, B DIMENSIONS	KF	JBH
5/4/07	B	REVISED A DIMENSION	KF	JBH
10/25/07	C	REVISED ELIMINATOR BLADES	KF	JBH
2/22/08	D	REVISED 'K' DIMENSION	KF	JBH
11/14/08	E	REVISED MANWAY SIZE	KF	JBH
6/1/10	F	REVISED MAKE-UP	KF	JBH
6/10/10	G	REVISED MAKE-UP MATERIAL	KF	JBH
6/3/11	H	OPTIONAL H2O HAMMER ARRESTER	LJH	JBH
7/29/15	I	REV. MAKE-UP ASSEMBLY	MO	JBH
1/29/18	J	ADDED OUTLET SIZING NOTE	SS	FP
4/1/25	K	STANDARD LADDER ORIENTATION	MO	FP



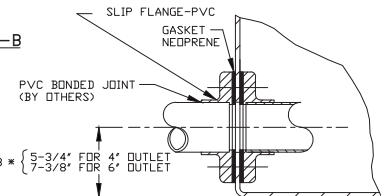
VIEW C-C



SECTION B-B



SECTION A-A
(SEE NOTE 1)



SECTION D-D
INLET & OUTLET

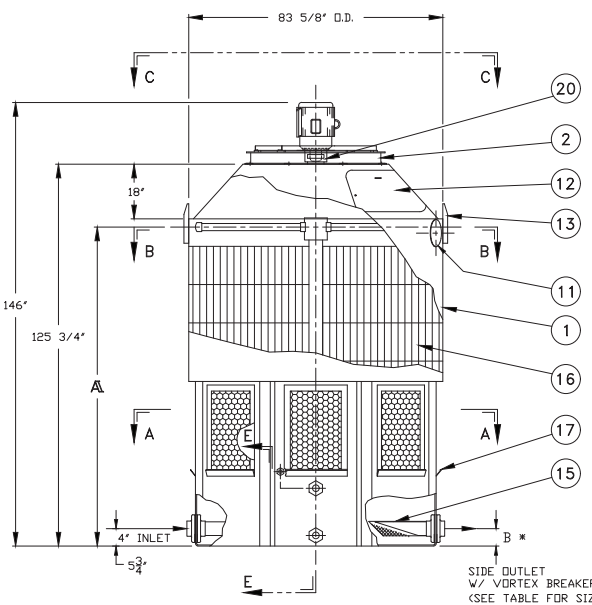
* OUTLET SIZE & ELEVATION TO BE VERIFIED BASED ON FINAL DESIGN CONDITIONS

NOTES:

- DIMENSIONS SHOWN ARE NOMINAL AND ARE SUBJECT TO FABRICATION TOLERANCES.
- TOWER TO BE INSTALLED ON A FLAT AND RIGID SURFACE, PROPERLY SUPPORTED.
- EXTERNAL PIPING MUST BE INDEPENDENTLY SUPPORTED.
- PIPING AND BULKHEAD FITTING MATERIAL IS PVC.
- HARDWARE MATERIAL IS TYPE 304 STAINLESS STEEL.
- FAN ASSEMBLY & SPRINKLER ARMS SHIPPED SEPARATELY FOR FIELD INSTALLATION.
- FOR BOTTOM OUTLET MAXIMUM OPENING IN SUPPORT TO BE 14" X 14", (CONSULT DELTA ENGINEERING FOR LARGER OPENINGS.)
- MAXIMUM INLET WATER TEMPERATURE 140°F. (CONSULT FACTORY FOR HIGHER TEMP. APPLICATIONS.)
- ALL WEIGHTS ARE IN POUNDS. DRY WT. INCLUDES FAN ASSEMBLY, SINGLE SPEED MOTOR & TOWER COMPLETE. MAX. FAN WT. INCLUDES FAN ASSEMBLY AND TWO SPEED MOTOR.
- RISER PIPE HAS 1/4" WEEP HOLE IN SUMP.
- SEE DWG NO DT-D-80-755 FOR MULTICELL LAYOUT.
- OPTIONAL H2O HAMMER ARRESTER MAY RELIEVE POTENTIAL WATER HAMMER DUE TO HIGH SUPPLY PRESSURE.

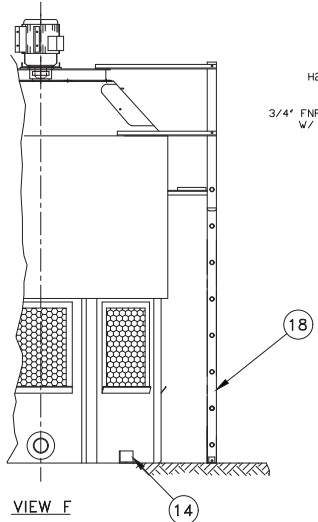


• 55I TO 85I OUTLET SIZING			
OUTLET SIZE	STANDARD 4"	OVERSIZED 6"	MUST BE PUMPED
SIDE OUTLET	150 GPM	325 GPM	>325 GPM
BOTTOM OUTLET	285 GPM	650 GPM	>650 GPM

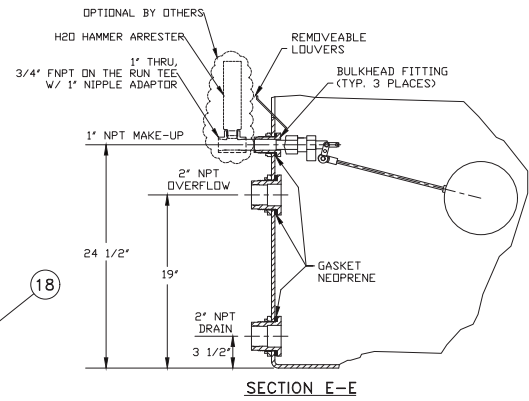


ELEVATION

* OUTLET SIZE & ELEVATION TO BE VERIFIED BASED ON FINAL DESIGN CONDITIONS



VIEW F

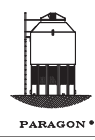


SECTION E-E

ITEM	QTY	PART NO.	DESCRIPTION	MATERIAL	REMARKS
21	1		H2O HAMMER ARRESTER	COPPER	OPTIONAL
20	1		VIBRATION SWITCH	STEEL	OPTIONAL
19	1		FLOAT VALVE	POLYPROPYLENE	
18	1		LADDER ASSEMBLY	ALUMINUM	OPTIONAL
17	1	SET	LADDER	PVC	
16	1	SET	FILL	PVC	
15	1		STRAINER	PLASTIC	OPTIONAL
14	4		ANCHOR LUG	ALUMINUM	
13	2		LIFTING LUG	ALUMINUM	
12	1		MANHOLE COVER	POLYETHYLENE	
11	1		CLEAN-OUT PORT	POLYETHYLENE	
10	4		MIST ELIMINATOR	POLYETHYLENE	
9	4		PIPE CAP	PVC	
8	4		SPRINKLER PIPE	PVC	
7	1		SPRINKLER HEAD	PVC	
6	1		FAN GUARD	COATED STEEL	
5	1		PROPELLER	POLYPROP/FRP	
4	1		ELECTRICAL BOX	ALUMINUM	
3	1		MOTOR	ALUM/STL	
2	1		FAN RING	COATED STEEL	
1	1		TOWER SHELL	POLYETHYLENE	

BILL OF MATERIALS

TOWER	T-55 I	T-70 I	T-85 I
FILL LAYERS	2 1/2	3 1/2	2 1/2
HP	2	3	5
DRY WT.	1180	1250	1270
OPER. WT.	3980	4050	4070
MAX. FAN WT.	255	255	273
	91 5/8"	101"	91 5/8"
BOTTOM OUT	4'	4'	6'



DELTA COOLING TOWERS, INC.
 185 US HIGHWAY 206 ROXBURY TOWNSHIP NJ 07836
 PH 973.586.2201 FAX 973.586.2243

TITLE: PARAGON ΔT-55 I, ΔT-70 I, ΔT-85 I
 PARAGON SERIES DWN BY Susan Taylor
 JOB# APPVD BY John Stokorny
 SCALE 5/8"=1'-0" DWG NO. DT-D-81-756
 DATE 7/06/05 REV. K

NOT TO BE USED FOR FABRICATION

INFORMATION CONTAINED HEREIN IS SUBJECT TO CHANGE WITHOUT NOTICE IN THE INTEREST OF PRODUCT IMPROVEMENT.

OUTLET SIZE TO BE VERIFIED BASED ON FINAL DESIGN CONDITIONS.