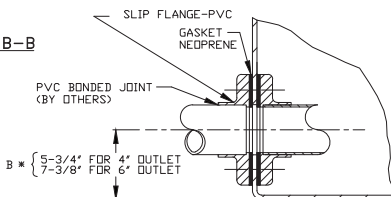
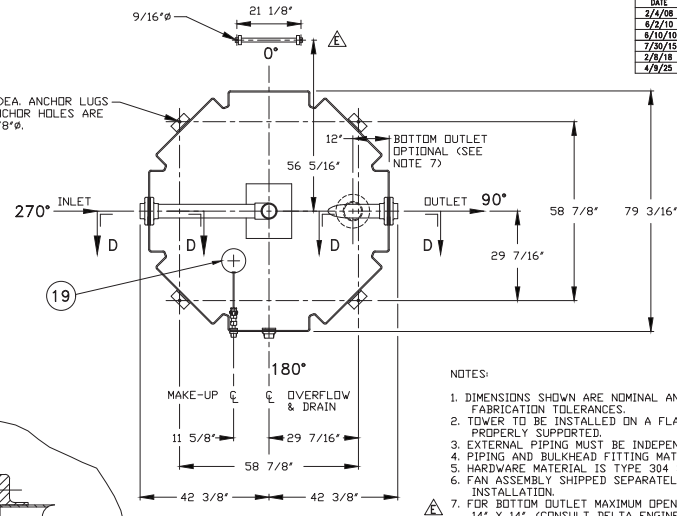
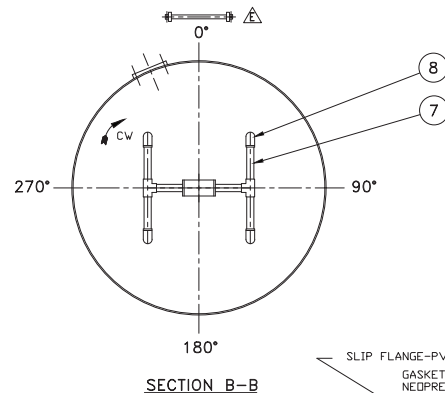
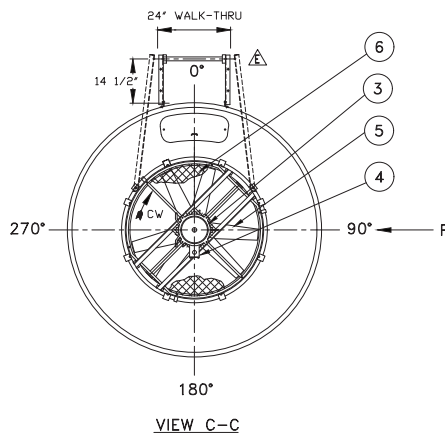
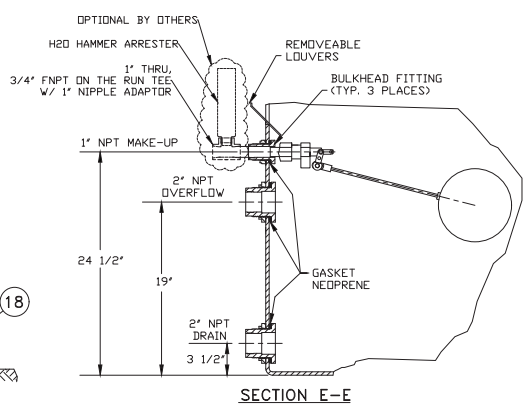
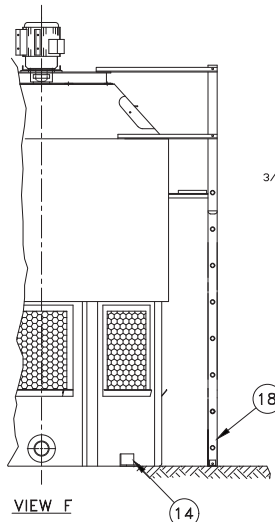
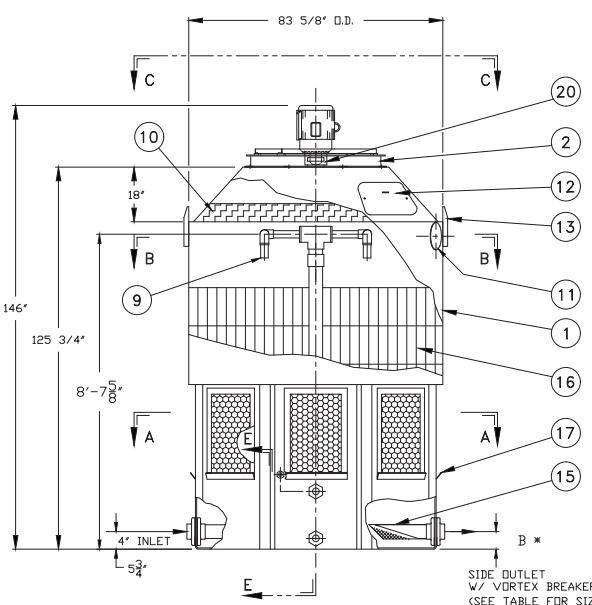


DATE	SYM	REVISION	AUTH	CHK
2/4/08		INITIAL ISSUE	KT	JBH
6/2/10	A	REVISED MAKE-UP STYLE	KT	JBH
6/10/10	B	REVISED MAKE-UP MATERIAL	KT	JBH
7/20/15	C	REVISED MAKE-UP ASSEMBLY	MD	JBH
2/8/18	D	ADDED OUTLET SIZING NOTE	SS	FP
4/9/25	E	0' STANDARD LADDER ORIENTATION	RR	FP



- NOTES:
- DIMENSIONS SHOWN ARE NOMINAL AND ARE SUBJECT TO FABRICATION TOLERANCES.
 - TOWER TO BE INSTALLED ON A FLAT AND RIGID SURFACE, PROPERLY SUPPORTED.
 - EXTERNAL PIPING MUST BE INDEPENDENTLY SUPPORTED.
 - PIPING AND BULKHEAD FITTING MATERIAL IS PVC.
 - HARDWARE MATERIAL IS TYPE 304 STAINLESS STEEL.
 - FAN ASSEMBLY SHIPPED SEPARATELY FOR FIELD INSTALLATION.
 - FOR BOTTOM OUTLET MAXIMUM OPENING IN SUPPORT TO BE 14" X 14". (CONSULT DELTA ENGINEERING FOR LARGER OPENINGS)
 - MAXIMUM INLET WATER TEMPERATURE 140°F. (CONSULT FACTORY FOR HIGHER TEMP. APPLICATIONS.)
 - SEE DWG. NO. DT-D-80-755 FOR MULTICELL LAYOUT.
 - ALL DIMENSIONS ARE IN INCHES.
 - ALL WEIGHTS ARE IN POUNDS. DRY WT. INCLUDES FAN ASSEMBLY, SINGLE SPEED MOTOR & TOWER COMPLETE. MAX. FAN WT. INCLUDES FAN ASSEMBLY AND TWO SPEED MOTOR.
 - RISER PIPE HAS 1/4" WEEP HOLE IN SUMP.
 - OPTIONAL H2O HAMMER ARRESTER MAY RELIEVE POTENTIAL WATER HAMMER DUE TO HIGH SUPPLY PRESSURE.

OUTLET SIZE	STANDARD 4"	OVERSIZED 6"	MUST BE PUMPED
SIDE OUTLET	150 GPM	325 GPM	>325 GPM
BOTTOM OUTLET	285 GPM	650 GPM	>650 GPM



ITEM	QTY	PART NO.	DESCRIPTION	MATERIAL	REMARKS
20	1		VIBRATION SWITCH	STEEL	OPTIONAL
19	1		FLD/AT VALVE	POLYPROPYLENE	
18	1		LADDER ASSEMBLY	ALUMINUM	OPTIONAL
17	1	SET	LADDER	PVC	
16	2	1/2"	FILL	PVC	
15	1		STRAINER	PLASTIC	OPTIONAL
14	4		ANCHOR LUG	ALUMINUM	
13	2		LIFTING LUG	ALUMINUM	
12	1		MANHOLE COVER	POLYETHYLENE	
11	1		CLEAN-OUT PORT	POLYETHYLENE	
10	1		MIST ELIMINATOR	POLYETHYLENE	
9	4		NOZZLES	PVC	
8	4		90° ELBOWS	PVC	
7	1		PIPING ASSEMBLY	PVC	
6	1		FAN GUARD	CDATED STEEL	
5	1		PROPELLER	POLYPROP/FRP	
4	1		ELECTRICAL BOX	ALUMINUM	
3	1		MOTOR	ALUM/STL	
2	1		FAN RING	CDATED STEEL	
1	1		TOWER SHELL	POLYETHYLENE	

DELTA COOLING TOWERS, INC.
 185 US HIGHWAY 206 ROXBURY TOWNSHIP NJ 07836
 PH 973.586.2201 FAX 973.586.2243

TITLE PARAGON ΔT-55 I, ΔT-70 I, ΔT-85 I
 w/ FIXED SPRAY HEADER
 PARAGON SERBIS DTW BY Simon Taylor
 JOB# APPVD BY John Stecher
 SCALE 5/8"=1'-0" DWG NO. DT-D-81-761
 DATE 2/4/08

TOWER	T-55 I	T-70 I	T-85 I
HP	2	3	5
DRY WT.	1180	1250	1270
OPER. WT.	3980	4050	4070
MAX. FAN WT.	255	255	273
BOTTOM OUT	4'	4'	6'

OUTLET SIZE TO BE VERIFIED BASED ON FINAL DESIGN CONDITIONS.

INFORMATION CONTAINED HEREIN IS SUBJECT TO CHANGE WITHOUT NOTICE IN THE INTEREST OF PRODUCT IMPROVEMENT.

NOT TO BE USED FOR FABRICATION